



**CATÁLOGO**  
PERFIS MODULARES





Fundada em 1998, por Marcelo Favero, a Estrutural se firmou e vem se mantendo, ao longo destas décadas, como líder nos segmentos de proteção de máquinas, posicionadores, enclausuramentos, escadas-plataforma, bancadas industriais, armários industriais, postos de trabalho industriais, projetos especiais e instalações.

Com sede estrategicamente localizada em Jacarei, tem fácil acesso às rodovias Presidente Dutra e Carvalho Pinto, mantendo proximidade aos grandes centros empresariais dos estados de São Paulo, Rio de Janeiro e Minas Gerais.

Conta com equipe dinâmica, bem treinada, colaborativa e muito experiente, para gerar um resultado de excelência para nossos clientes.

"Só fazemos melhor aquilo que repetidamente insistimos em melhorar. A busca da excelência não deve ser um objetivo, e sim um hábito."

- **Aristoteles**

QUER SABER  
MAIS DA ESTRUTURAL?  
ACESSE O QR CODE





**INFORMAÇÕES TÉCNICAS GERAIS**

Liga: 6063

Tratamento térmico: T5

Tratamento superficial: Anodização natural fosca (demais opções sob consulta)

Espessura da anodização: 11 a 15  $\mu\text{m}$

Resistência a tração: 185 N/mm<sup>2</sup>

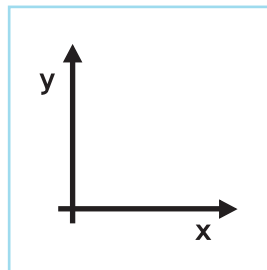
Limite de escoamento: 145 N/mm<sup>2</sup>

Densidade: 2,71 g/cm<sup>3</sup>

Módulo de elasticidade: 70.000 N/mm<sup>2</sup>

Posição da origem: Canto inferior esquerdo

Orientação dos eixos:

**SIMBOLOGIA****M7**

Núcleo roscável M7

**M14**

Núcleo roscável M14

**M8**

Núcleo roscável M8

**M16**

Núcleo roscável M16

**M12**

Núcleo roscável M12

**8**

Perfil com canal de 8,0mm à 8,3mm

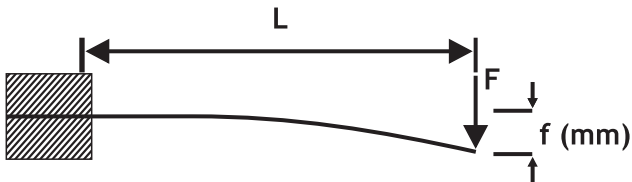
**10**

Perfil com canal de 10,0mm à 11,0mm

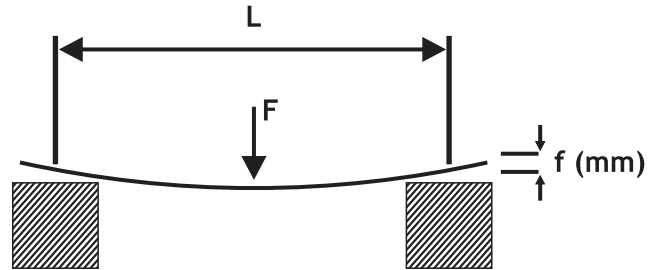


CÁLCULO DE RESISTÊNCIA

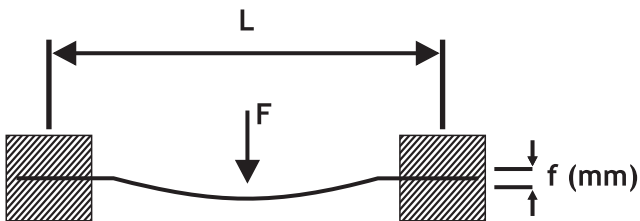
TIPO DE CARGA 1



TIPO DE CARGA 2



TIPO DE CARGA 3



Flexão do perfil com a força F para os casos de carga estática:

$$f_1 = \frac{F \times L^3}{3E \times I \times 10^4}$$

$$f_2 = \frac{F \times L^3}{48E \times I \times 10^4}$$

$$f_3 = \frac{F \times L^3}{192E \times I \times 10^4}$$

f [mm]  
F [N]  
L [mm]  
I [cm<sup>4</sup>]  
W [cm<sup>3</sup>]

Flexão do perfil pelo seu próprio peso:

$$f_1 = \frac{F \times L^3}{8E \times I \times 10^4}$$

$$f_2 = \frac{5 \times F \times L^3}{384E \times I \times 10^4}$$

$$f_3 = \frac{F \times L^3}{384E \times I \times 10^4}$$

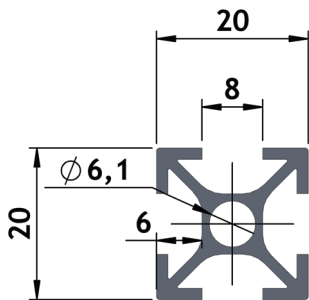
 **SUMÁRIO**

PERFIS 20	09
PERFIS 25	10
PERFIS 30	13
PERFIS 40	18
PERFIS 45	27
PERFIS 50	30
PERFIS 60	32
PERFIS ESPECIAIS (CANTONEIRAS)	33
PERFIS ESPECIAIS (DOBRADIÇAS)	35
PERFIS ESPECIAIS (GAVETAS)	36
PERFIS ESPECIAIS (DIVERSOS)	38
SELEÇÃO FURAÇÃO E CONECTORES	42
ACESSÓRIOS CONECTORES	47
ACESSÓRIOS CANTONEIRAS	52
ACESSÓRIOS PORCAS	54
ACESSÓRIOS DOBRADIÇAS	56
ACESSÓRIOS PUXADORES	61
ACESSÓRIOS CAPAS	62
ACESSÓRIOS ROLDANAS	63
ACESSÓRIOS PÉS DE NIVELAMENTO	64
ACESSÓRIOS DELIZANTE BALANCIM	65
ACESSÓRIOS MONTANTE TRIPLO ABAULADO	66

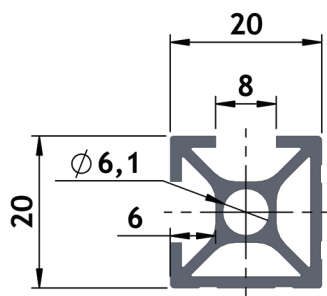




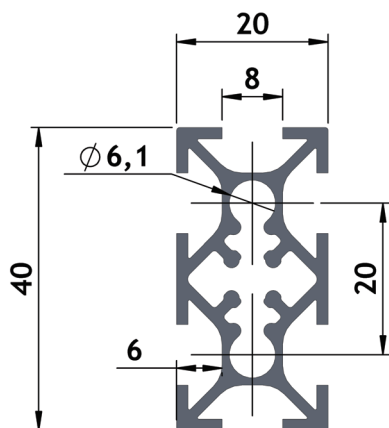
# PERFIL 20



V-B	
$I_{xy}$	0,58 cm <sup>4</sup>
$W_{xy}$	0,58 cm <sup>3</sup>
Área Transversal	1,36 cm <sup>2</sup>
Peso	0,37 kg/m
Corte Máximo	6000 mm



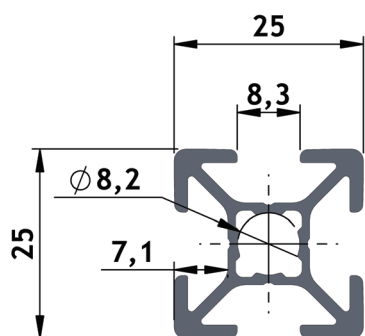
V-2FL	
$I_x$	0,68 cm <sup>4</sup>
$I_y$	0,67 cm <sup>4</sup>
$W_x$	0,64 cm <sup>3</sup>
$W_y$	0,63 cm <sup>3</sup>
Área Transversal	1,58 cm <sup>2</sup>
Peso	0,43 kg/m
Corte Máximo	6000 mm



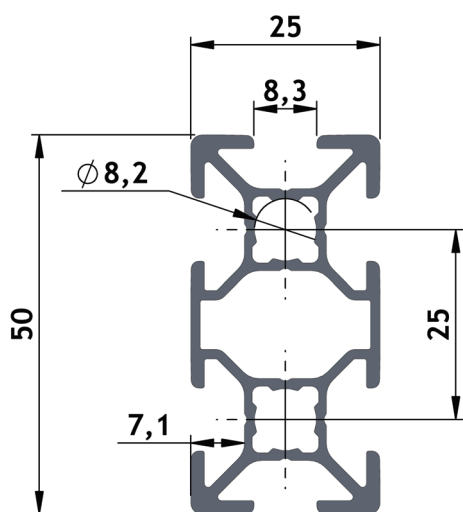
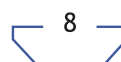
VQ-B	
$I_x$	3,88 cm <sup>4</sup>
$I_y$	1,10 cm <sup>4</sup>
$W_x$	1,94 cm <sup>3</sup>
$W_y$	1,10 cm <sup>3</sup>
Área Transversal	2,66 cm <sup>2</sup>
Peso	0,72 kg/m
Corte Máximo	6000 mm



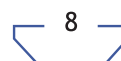
# PERFIL 25



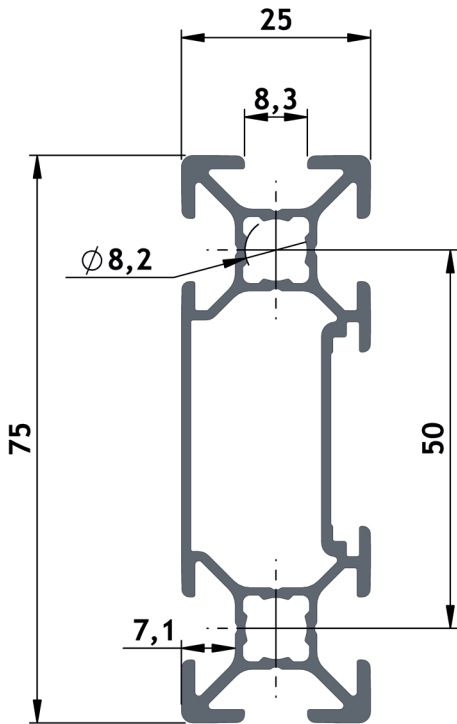
VC-B	
$I_{xy}$	1,41 cm <sup>4</sup>
$W_{xy}$	1,13 cm <sup>3</sup>
Área Transversal	2,38 cm <sup>2</sup>
Peso	0,53 kg/m
Corte Máximo	6000 mm



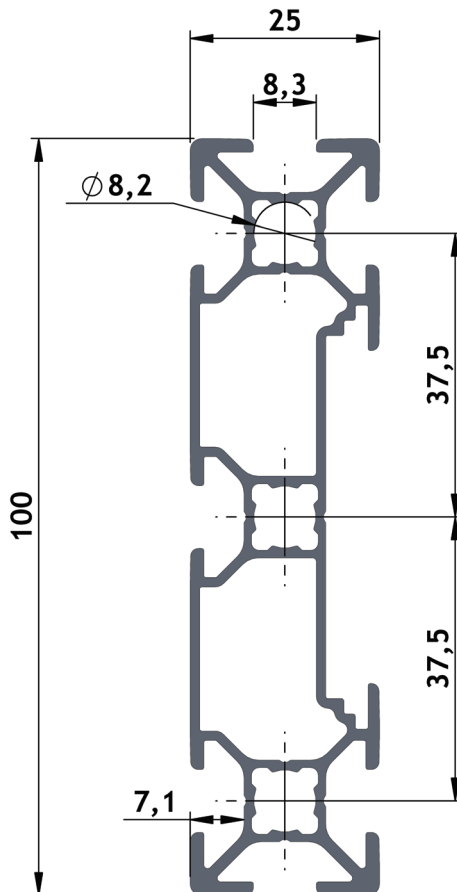
VCC-B	
$I_x$	2,40 cm <sup>4</sup>
$I_y$	8,96 cm <sup>4</sup>
$W_x$	0,96 cm <sup>3</sup>
$W_y$	7,17 cm <sup>3</sup>
Área Transversal	3,30 cm <sup>2</sup>
Peso	0,89 kg/m
Corte Máximo	6000 mm



# PERFIL 25



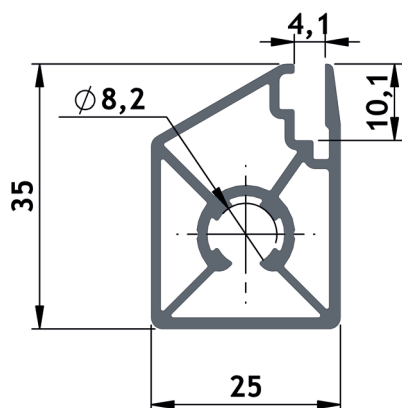
VCST-CV1	
$I_x$	3,15 cm <sup>4</sup>
$I_y$	26,97 cm <sup>4</sup>
$W_x$	0,84 cm <sup>3</sup>
$W_y$	21,56 cm <sup>3</sup>
Área Transversal	4,15 cm <sup>2</sup>
Peso	1,12 kg/m
Corte Máximo	6000 mm



VCS-CV2	
$I_x$	3,70 cm <sup>4</sup>
$I_y$	58,29 cm <sup>4</sup>
$W_x$	0,74 cm <sup>3</sup>
$W_y$	48,98 cm <sup>3</sup>
Área Transversal	5,28 cm <sup>2</sup>
Peso	1,42 kg/m
Corte Máximo	6000 mm

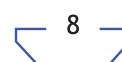


# PERFIL 25

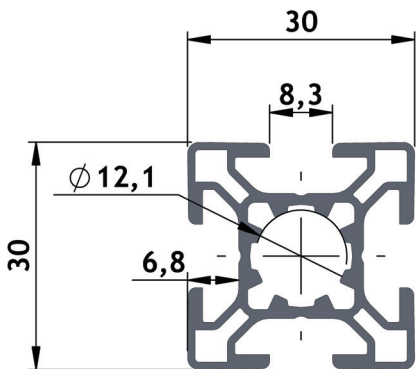


## VC-1FRL

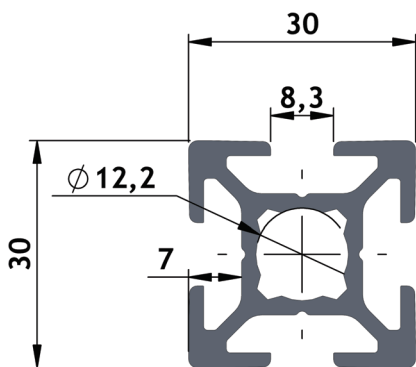
Ix	2,70 cm <sup>4</sup>
Iy	1,67 cm <sup>4</sup>
Wx	1,37 cm <sup>3</sup>
Wy	1,24 cm <sup>3</sup>
Área Transversal	2,55 cm <sup>2</sup>
Peso	0,69 kg/m
Corte Máximo	6000 mm



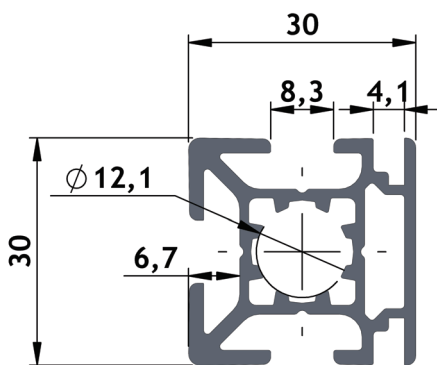
# PERFIL 30



T-B	
$I_{xy}$	2,44 cm <sup>4</sup>
$W_{xy}$	1,63 cm <sup>3</sup>
Área Transversal	2,71 cm <sup>2</sup>
Peso	0,73 kg/m
Corte Máximo	6000 mm



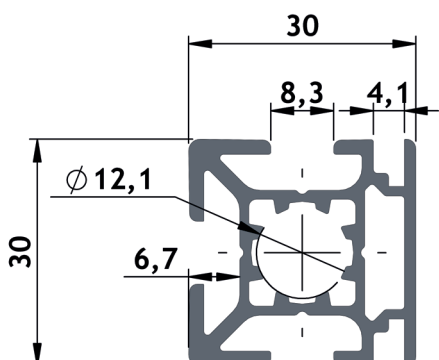
T-R	
$I_{xy}$	3,30 cm <sup>4</sup>
$W_{xy}$	2,20 cm <sup>3</sup>
Área Transversal	3,39 cm <sup>2</sup>
Peso	0,92 kg/m
Corte Máximo	6000 mm



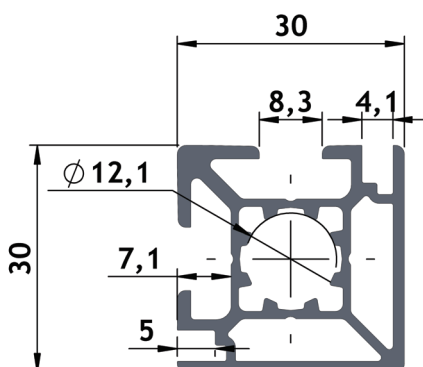
T-1FR-L	
$I_x$	1,47 cm <sup>4</sup>
$I_y$	1,50 cm <sup>4</sup>
$W_x$	2,03 cm <sup>3</sup>
$W_y$	1,79 cm <sup>3</sup>
Área Transversal	3,00 cm <sup>2</sup>
Peso	0,81 kg/m
Corte Máximo	6000 mm



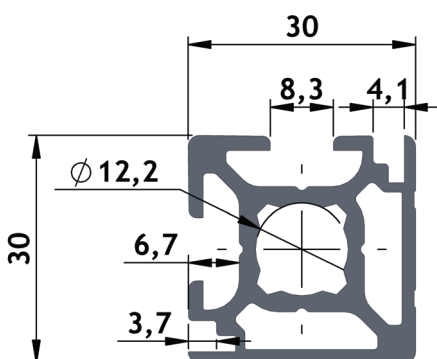
# PERFIL 30



T-1FR-L	
I <sub>x</sub>	1,47 cm <sup>4</sup>
I <sub>y</sub>	1,50 cm <sup>4</sup>
W <sub>x</sub>	2,03 cm <sup>3</sup>
W <sub>y</sub>	1,79 cm <sup>3</sup>
Área Transversal	3,00 cm <sup>2</sup>
Peso	0,81 kg/m
Corte Máximo	6000 mm



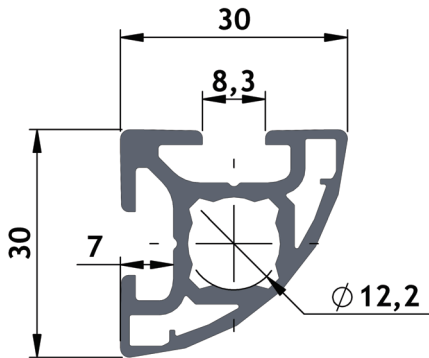
T-2FR-L	
I <sub>x</sub>	3,02 cm <sup>4</sup>
I <sub>y</sub>	2,54 cm <sup>4</sup>
W <sub>x</sub>	1,97 cm <sup>3</sup>
W <sub>y</sub>	1,66 cm <sup>3</sup>
Área Transversal	2,81 cm <sup>2</sup>
Peso	0,76 kg/m
Corte Máximo	6000 mm



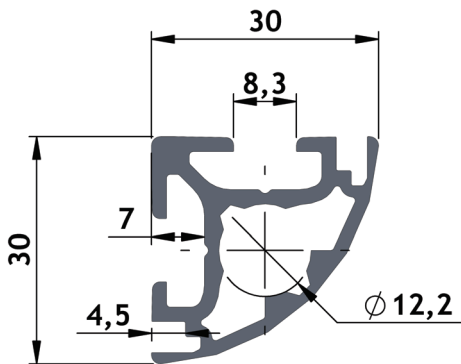
T-2FR	
I <sub>x</sub>	3,59 cm <sup>4</sup>
I <sub>y</sub>	2,88 cm <sup>4</sup>
W <sub>x</sub>	2,32 cm <sup>3</sup>
W <sub>y</sub>	1,86 cm <sup>3</sup>
Área Transversal	3,58 cm <sup>2</sup>
Peso	0,97 kg/m
Corte Máximo	6000 mm



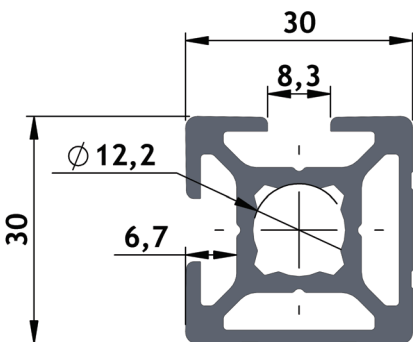
# PERFIL 30



T-A	
Ix	2,64 cm <sup>4</sup>
Iy	1,78 cm <sup>4</sup>
Wx	1,56 cm <sup>3</sup>
Wy	1,05 cm <sup>3</sup>
Área Transversal	2,84 cm <sup>2</sup>
Peso	0,77 kg/m
Corte Máximo	6000 mm



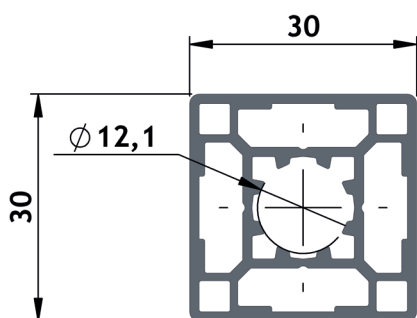
T-A-2FR	
Ix	2,42 cm <sup>4</sup>
Iy	1,72 cm <sup>4</sup>
Wx	1,41 cm <sup>3</sup>
Wy	1,00 cm <sup>3</sup>
Área Transversal	2,60 cm <sup>2</sup>
Peso	0,70 kg/m
Corte Máximo	6000 mm



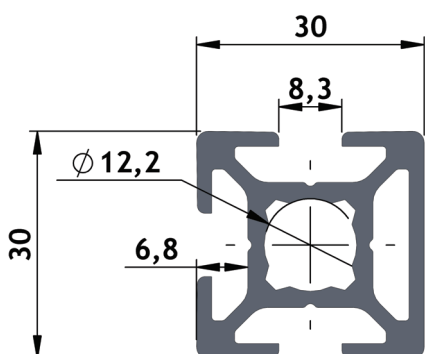
T-2FL	
Ix	3,61 cm <sup>4</sup>
Iy	3,59 cm <sup>4</sup>
Wx	2,33 cm <sup>3</sup>
Wy	2,32 cm <sup>3</sup>
Área Transversal	3,79 cm <sup>2</sup>
Peso	1,02 kg/m
Corte Máximo	6000 mm



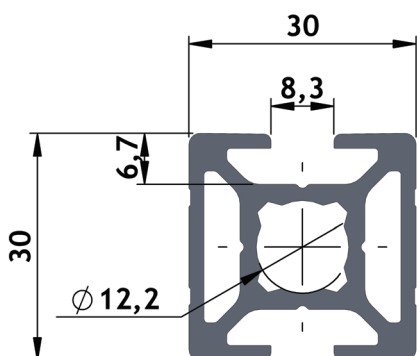
# PERFIL 30



T-F	
$I_{xy}$	3,04 cm <sup>4</sup>
$W_{xy}$	2,03 cm <sup>3</sup>
Área Transversal	3,10 cm <sup>2</sup>
Peso	0,84 kg/m
Corte Máximo	6000 mm



T-1F	
$I_x$	3,68 cm <sup>4</sup>
$I_y$	3,36 cm <sup>4</sup>
$W_x$	2,45 cm <sup>3</sup>
$W_y$	2,14 cm <sup>3</sup>
Área Transversal	3,70 cm <sup>2</sup>
Peso	1,00 kg/m
Corte Máximo	6000 mm

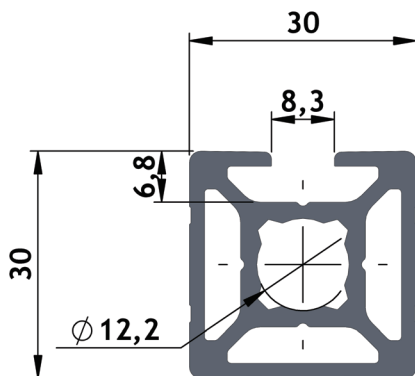


T-2FO	
$I_x$	4,02 cm <sup>4</sup>
$I_y$	3,37 cm <sup>4</sup>
$W_x$	2,68 cm <sup>3</sup>
$W_y$	2,25 cm <sup>3</sup>
Área Transversal	3,87 cm <sup>2</sup>
Peso	1,04 kg/m
Corte Máximo	6000 mm



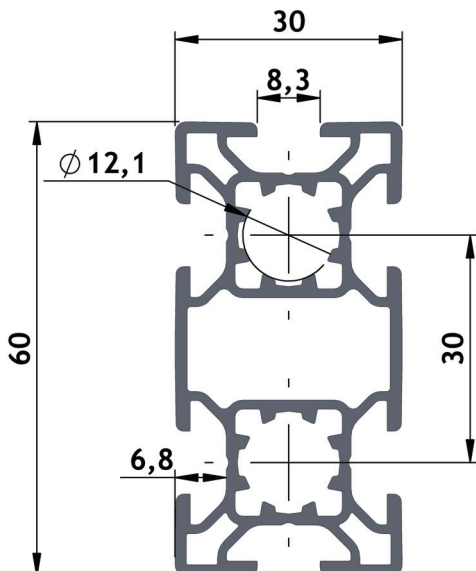


# PERFIL 30



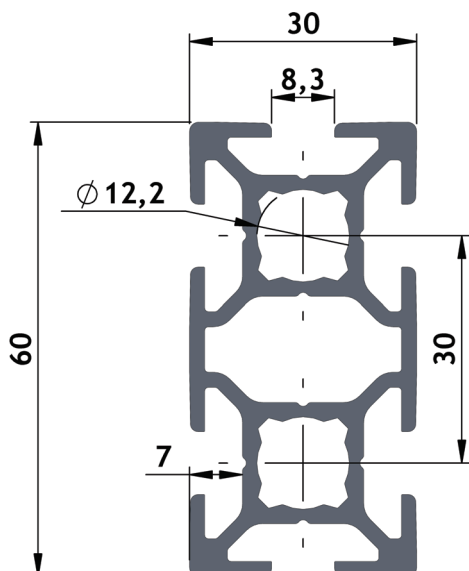
## T-3FU

I <sub>x</sub>	4,03 cm <sup>4</sup>
I <sub>y</sub>	3,69 cm <sup>4</sup>
W <sub>x</sub>	2,58 cm <sup>3</sup>
W <sub>y</sub>	2,46 cm <sup>3</sup>
Área Transversal	4,04 cm <sup>2</sup>
Peso	1,09 kg/m
Corte Máximo	6000 mm



## TS-B

I <sub>x</sub>	18,50 cm <sup>4</sup>
I <sub>y</sub>	4,88 cm <sup>4</sup>
W <sub>x</sub>	6,17 cm <sup>3</sup>
W <sub>y</sub>	3,25 cm <sup>3</sup>
Área Transversal	4,96 cm <sup>2</sup>
Peso	1,34 kg/m
Corte Máximo	6000 mm

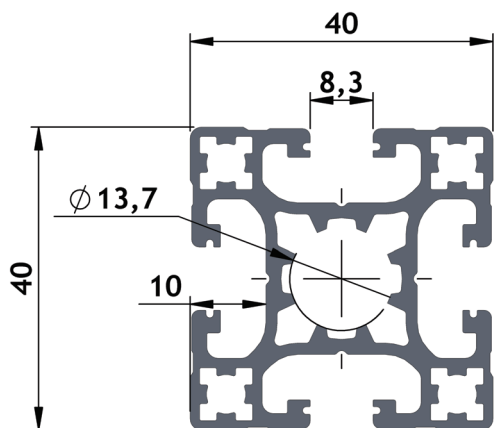


## TS-R

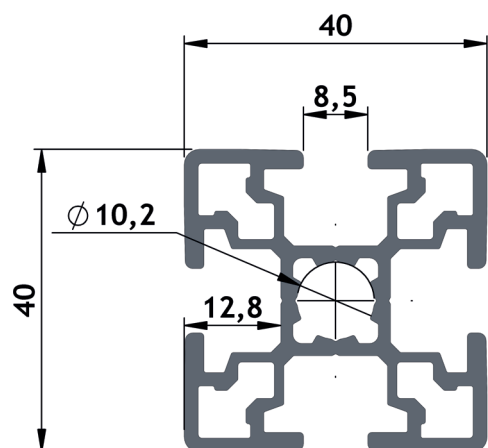
I <sub>x</sub>	21,86 cm <sup>4</sup>
I <sub>y</sub>	5,90 cm <sup>4</sup>
W <sub>x</sub>	7,29 cm <sup>3</sup>
W <sub>y</sub>	3,93 cm <sup>3</sup>
Área Transversal	5,99 cm <sup>2</sup>
Peso	1,62 kg/m
Corte Máximo	6000 mm



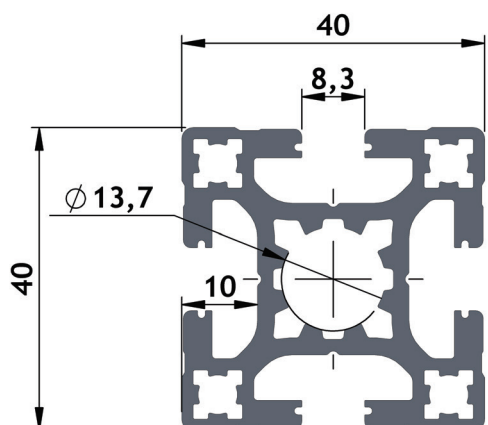
# PERFIL 40



Q-B	
I <sub>xy</sub>	8,45 cm <sup>4</sup>
W <sub>xy</sub>	4,23 cm <sup>3</sup>
Área Transversal	5,13 cm <sup>2</sup>
Peso	1,39 kg/m
Corte Máximo	6000 mm



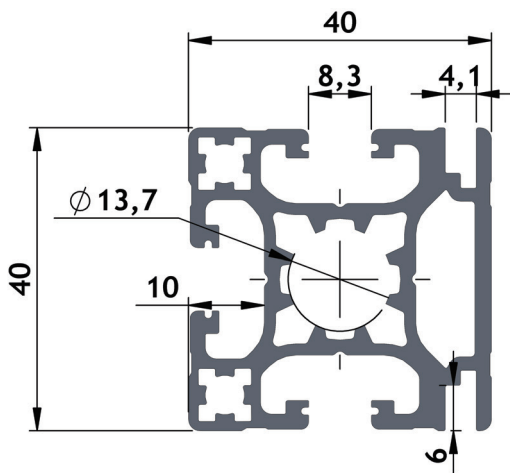
QM12-B	
I <sub>xy</sub>	8,53 cm <sup>4</sup>
W <sub>xy</sub>	4,27 cm <sup>3</sup>
Área Transversal	5,11 cm <sup>2</sup>
Peso	1,38 kg/m
Corte Máximo	6000 mm



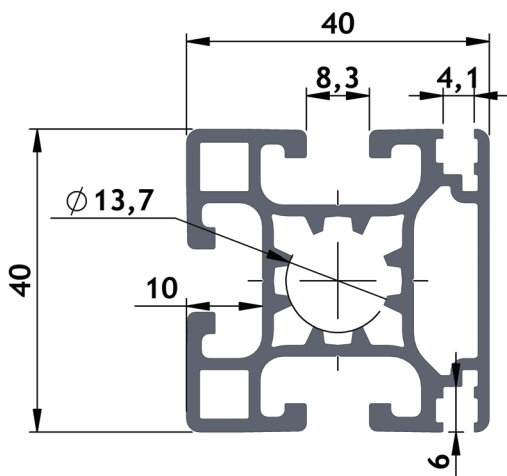
Q-R	
I <sub>xy</sub>	9,94 cm <sup>4</sup>
W <sub>xy</sub>	4,97 cm <sup>3</sup>
Área Transversal	6,22 cm <sup>2</sup>
Peso	1,68 kg/m
Corte Máximo	6000 mm



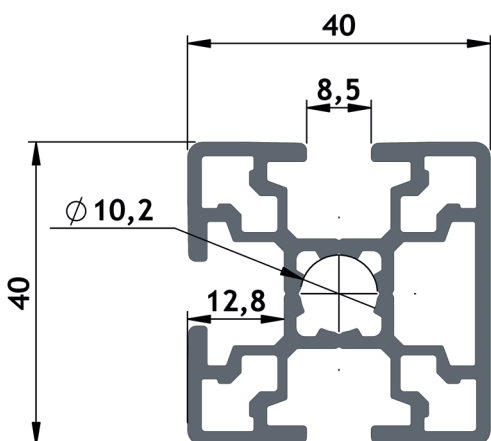
# PERFIL 40



Q-1FR	
Ix	8,69 cm <sup>4</sup>
Iy	9,25 cm <sup>4</sup>
Wx	4,34 cm <sup>3</sup>
Wy	4,42 cm <sup>3</sup>
Área Transversal	5,44 cm <sup>2</sup>
Peso	1,47 kg/m
Corte Máximo	6000 mm



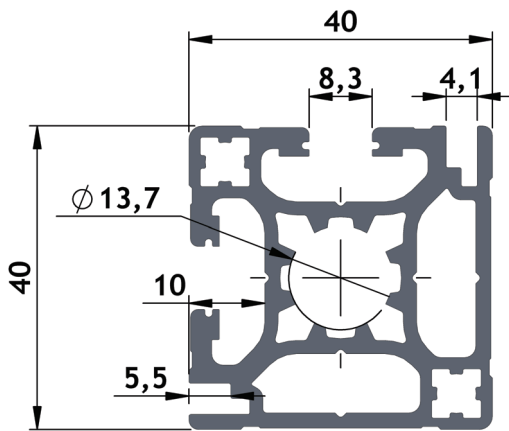
Q-1FR-L	
Ix	8,37 cm <sup>4</sup>
Iy	8,19 cm <sup>4</sup>
Wx	4,19 cm <sup>3</sup>
Wy	4,03 cm <sup>3</sup>
Área Transversal	4,95 cm <sup>2</sup>
Peso	1,34 kg/m
Corte Máximo	6000 mm



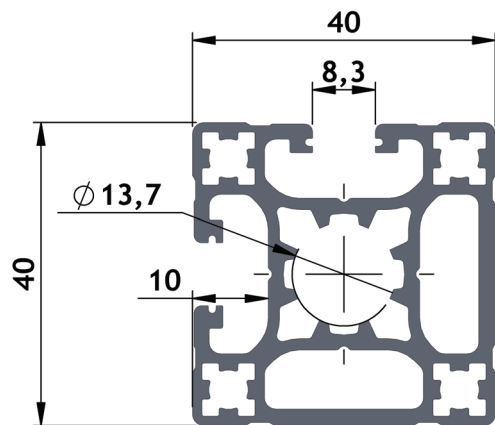
QM12-1F	
Ix	9,05 cm <sup>4</sup>
Iy	8,57 cm <sup>4</sup>
Wx	4,53 cm <sup>3</sup>
Wy	4,20 cm <sup>3</sup>
Área Transversal	5,27 cm <sup>2</sup>
Peso	1,42 kg/m
Corte Máximo	6000 mm



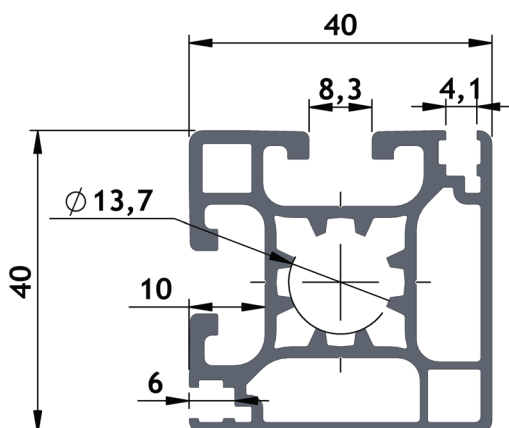
# PERFIL 40



Q-2FR	
Ix	9,51 cm <sup>4</sup>
Iy	9,24 cm <sup>4</sup>
Wx	4,73 cm <sup>3</sup>
Wy	4,60 cm <sup>3</sup>
Área Transversal	5,74 cm <sup>2</sup>
Peso	1,55 kg/m
Corte Máximo	6000 mm



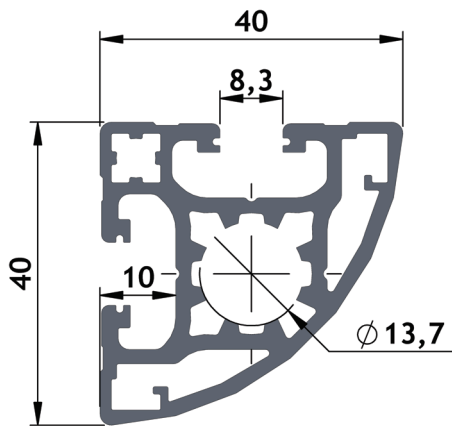
Q-2FL	
Ix	8,94 cm <sup>4</sup>
Iy	8,92 cm <sup>4</sup>
Wx	4,38 cm <sup>3</sup>
Wy	4,35 cm <sup>3</sup>
Área Transversal	5,37 cm <sup>2</sup>
Peso	1,45 kg/m
Corte Máximo	6000 mm



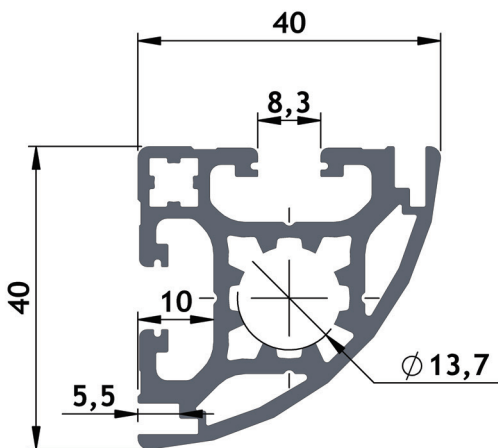
Q-2FR-L	
Ix	8,05 cm <sup>4</sup>
Iy	8,00 cm <sup>4</sup>
Wx	3,97 cm <sup>3</sup>
Wy	3,94 cm <sup>3</sup>
Área Transversal	4,81 cm <sup>2</sup>
Peso	1,30 kg/m
Corte Máximo	6000 mm



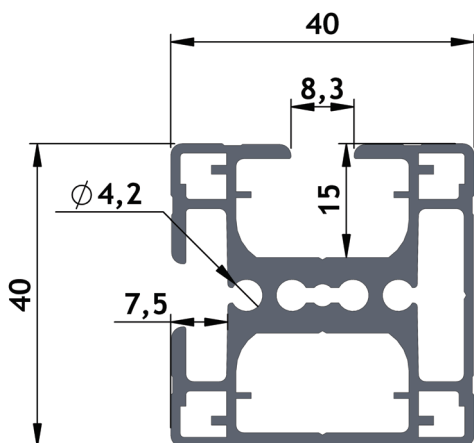
# PERFIL 40



Q-A	
Ix	8,18 cm <sup>4</sup>
Iy	4,81 cm <sup>4</sup>
Wx	3,65 cm <sup>3</sup>
Wy	2,15 cm <sup>3</sup>
Área Transversal	4,76 cm <sup>2</sup>
Peso	1,28 kg/m
Corte Máximo	6000 mm



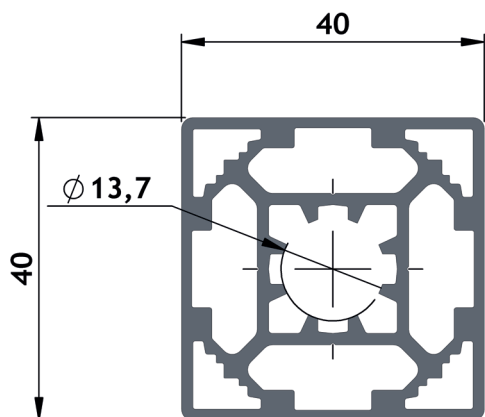
Q-A2FR	
Ix	4,84 cm <sup>4</sup>
Iy	8,47 cm <sup>4</sup>
Wx	2,17 cm <sup>3</sup>
Wy	4,79 cm <sup>3</sup>
Área Transversal	4,90 cm <sup>2</sup>
Peso	1,32 kg/m
Corte Máximo	6000 mm



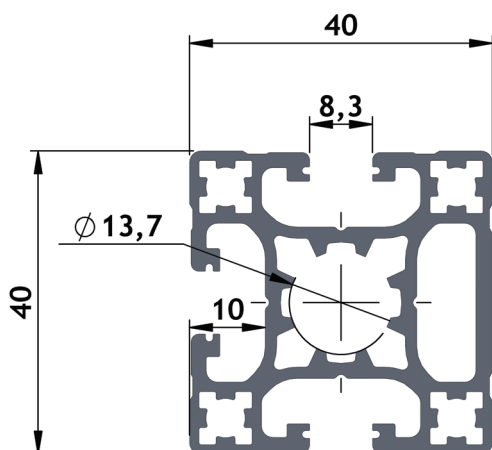
QL-2FL	
Ix	8,01 cm <sup>4</sup>
Iy	7,28 cm <sup>4</sup>
Wx	3,91 cm <sup>3</sup>
Wy	3,62 cm <sup>3</sup>
Área Transversal	5,17 cm <sup>2</sup>
Peso	1,39 kg/m
Corte Máximo	6000 mm



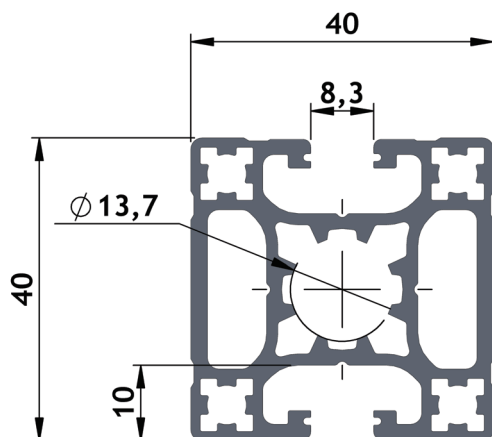
# PERFIL 40



Q-F	
I <sub>xy</sub>	9,48 cm <sup>4</sup>
W <sub>xy</sub>	4,74 cm <sup>3</sup>
Área Transversal	5,59 cm <sup>2</sup>
Peso	1,51kg/m
Corte Máximo	6000mm



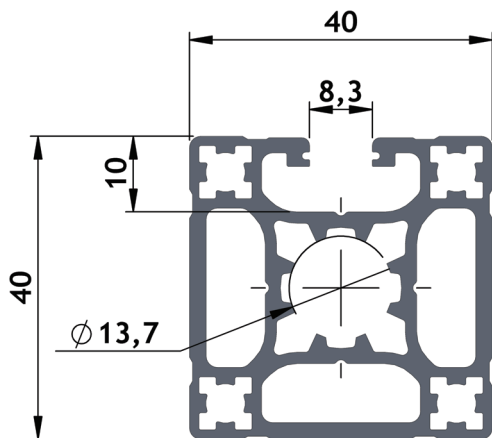
Q-1F	
I <sub>x</sub>	8,44 cm <sup>4</sup>
I <sub>y</sub>	8,94 cm <sup>4</sup>
W <sub>x</sub>	4,24 cm <sup>3</sup>
W <sub>y</sub>	4,40 cm <sup>3</sup>
Área Transversal	5,25 cm <sup>2</sup>
Peso	1,42 kg/m
Corte Máximo	6000 mm



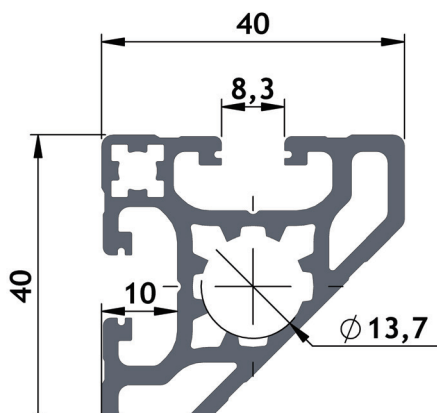
Q-2FO	
I <sub>x</sub>	9,45 cm <sup>4</sup>
I <sub>y</sub>	8,43 cm <sup>4</sup>
W <sub>x</sub>	4,73 cm <sup>3</sup>
W <sub>y</sub>	4,22 cm <sup>3</sup>
Área Transversal	5,37 cm <sup>2</sup>
Peso	1,45 kg/m
Corte Máximo	6000 mm



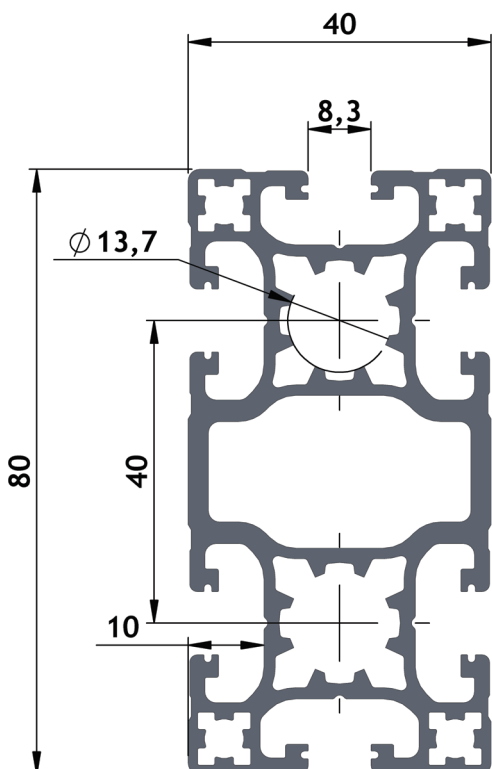
# PERFIL 40



Q-3FU	
Ix	9,44 cm <sup>4</sup>
Iy	8,92 cm <sup>4</sup>
Wx	4,63 cm <sup>3</sup>
Wy	4,46 cm <sup>3</sup>
Área Transversal	5,49 cm <sup>2</sup>
Peso	1,48 kg/m
Corte Máximo	6000 mm



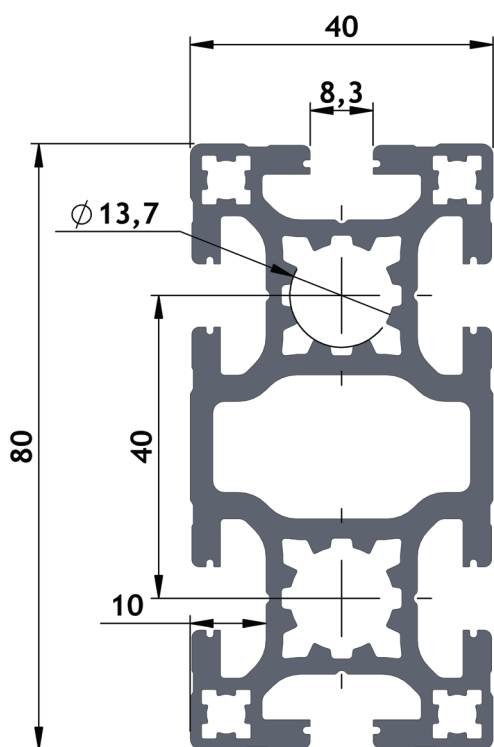
Q-CH	
Ix	9,19 cm <sup>4</sup>
Iy	4,08 cm <sup>4</sup>
Wx	4,01 cm <sup>3</sup>
Wy	1,78 cm <sup>3</sup>
Área Transversal	4,63 cm <sup>2</sup>
Peso	1,25 kg/m
Corte Máximo	6000 mm



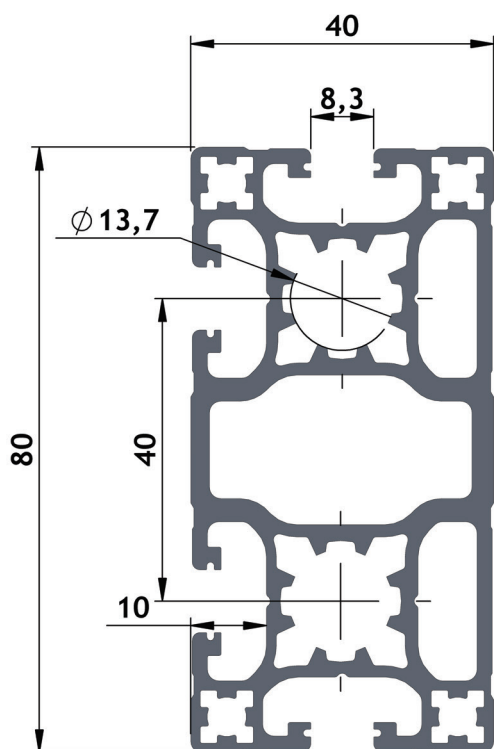
QO-B	
Ix	58,07 cm <sup>4</sup>
Iy	16,78 cm <sup>4</sup>
Wx	14,52 cm <sup>3</sup>
Wy	8,39 cm <sup>3</sup>
Área Transversal	9,34 cm <sup>2</sup>
Peso	2,52 kg/m
Corte Máximo	6000 mm



# PERFIL 40



QO-R	
Ix	69,93 cm <sup>4</sup>
Iy	19,77 cm <sup>4</sup>
Wx	17,48 cm <sup>3</sup>
Wy	9,89 cm <sup>3</sup>
Área Transversal	11,56 cm <sup>2</sup>
Peso	3,12 kg/m
Corte Máximo	6000 mm

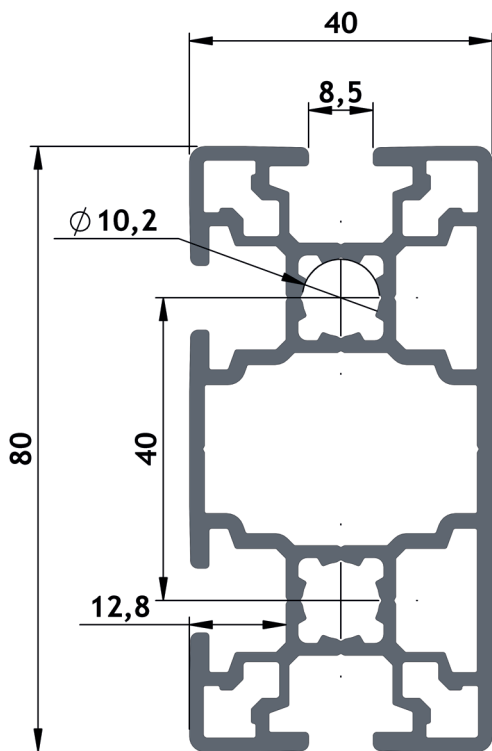


QO-1F	
Ix	58,77 cm <sup>4</sup>
Iy	17,59 cm <sup>4</sup>
Wx	14,69 cm <sup>3</sup>
Wy	8,58 cm <sup>3</sup>
Área Transversal	9,64 cm <sup>2</sup>
Peso	2,60 kg/m
Corte Máximo	6000 mm



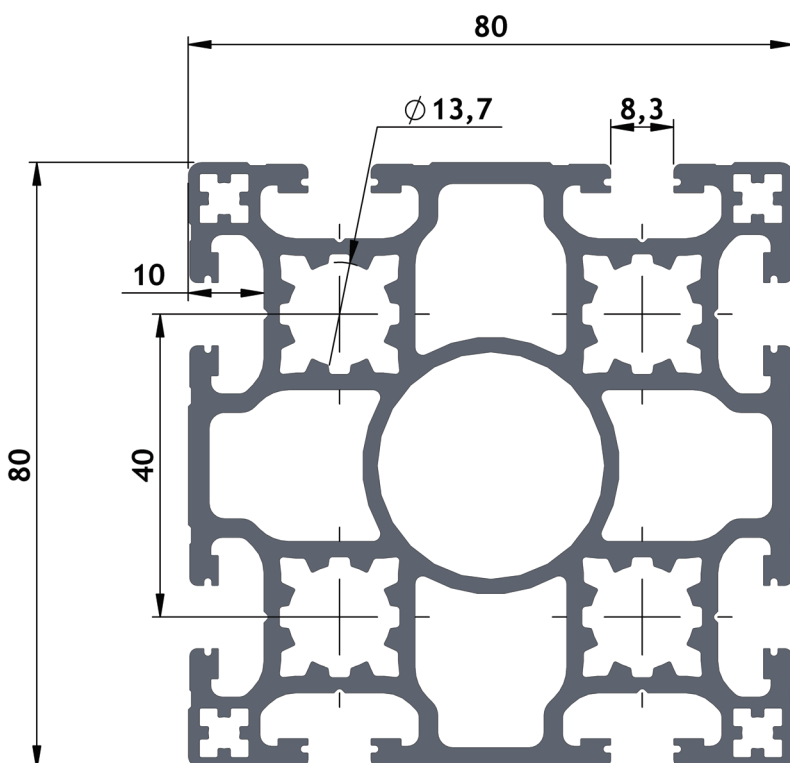


# PERFIL 40



## QOM12-1F

Ix	59,09 cm <sup>4</sup>
Iy	16,32 cm <sup>4</sup>
Wx	14,77 cm <sup>3</sup>
Wy	7,96 cm <sup>3</sup>
Área Transversal	8,79 cm <sup>2</sup>
Peso	2,37 kg/m
Corte Máximo	6000 mm

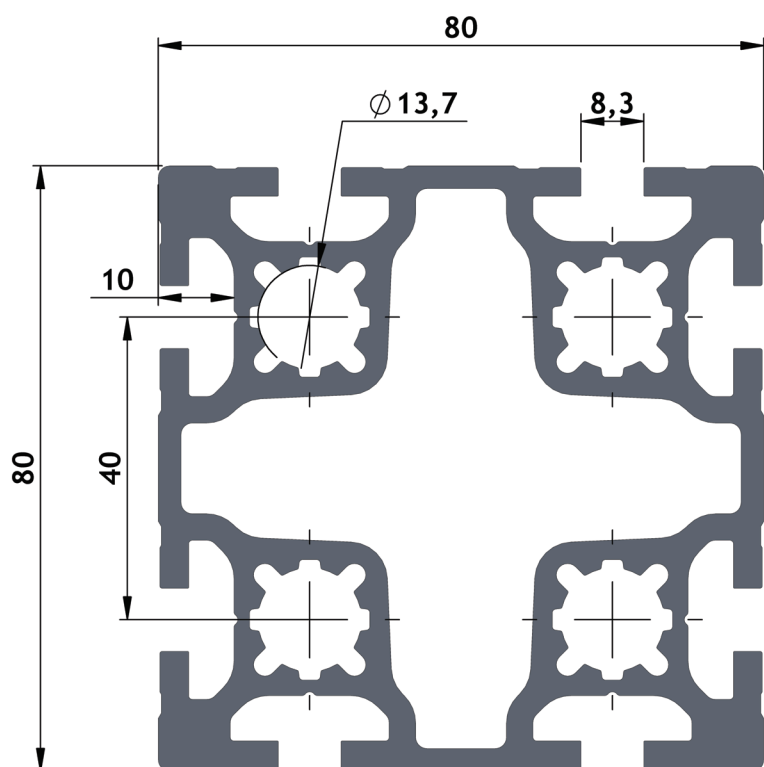


## O-B

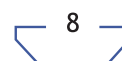
Ixy	124,21 cm <sup>4</sup>
Wxy	31,05 cm <sup>3</sup>
Área Transversal	18,98 cm <sup>2</sup>
Peso	5,12 kg/m
Corte Máximo	Sob Consulta



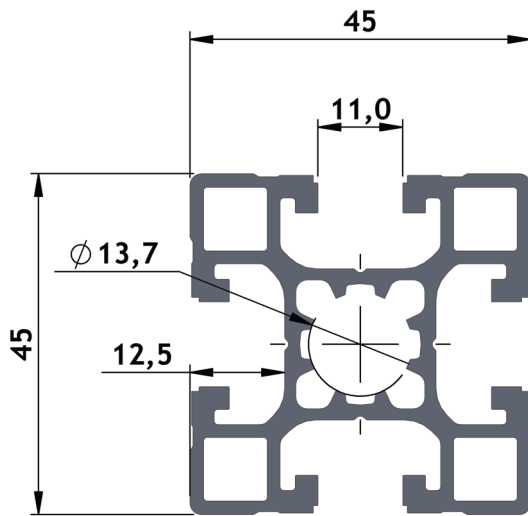
# PERFIL 40



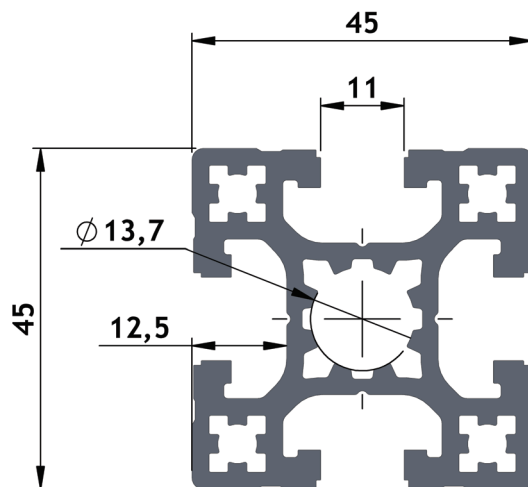
O-R	
$I_{xy}$	153,73 cm <sup>4</sup>
$W_{xy}$	38,43 cm <sup>3</sup>
Área Transversal	21,22 cm <sup>2</sup>
Peso	5,73 kg/m
Corte Máximo	Sob Consulta



# PERFIL 45



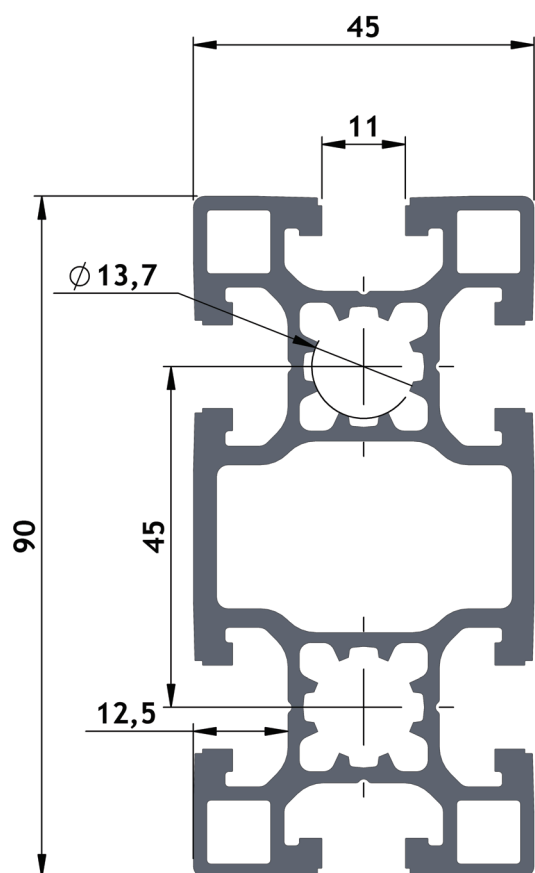
QC-B	
I <sub>xy</sub>	12,90 cm <sup>4</sup>
W <sub>xy</sub>	5,73 cm <sup>3</sup>
Área Transversal	6,24 cm <sup>2</sup>
Peso	1,69 kg/m
Corte Máximo	6000 mm



QC-R	
I <sub>xy</sub>	16,67 cm <sup>4</sup>
W <sub>xy</sub>	7,41 cm <sup>3</sup>
Área Transversal	8,00 cm <sup>2</sup>
Peso	2,16 kg/m
Corte Máximo	6000 mm



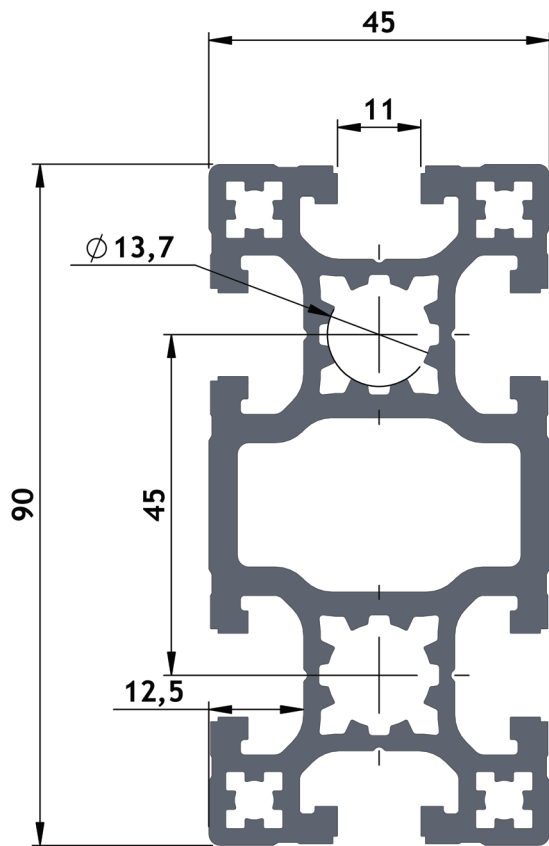
# PERFIL 45



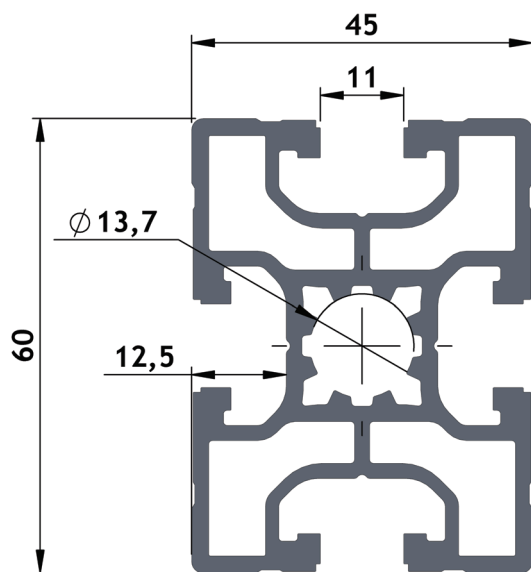
QN-B	
Ix	27,06 cm <sup>4</sup>
Iy	95,68 cm <sup>4</sup>
Wx	6,01 cm <sup>3</sup>
Wy	42,66 cm <sup>3</sup>
Área Transversal	11,75 cm <sup>2</sup>
Peso	3,17 kg/m
Corte Máximo	6000 mm



# PERFIL 45



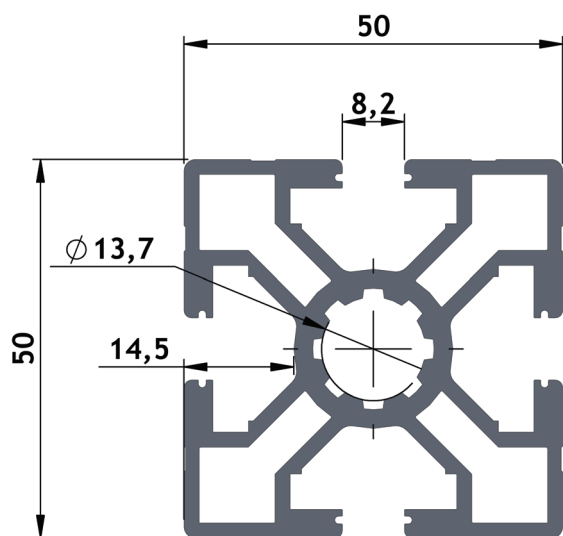
QC-NR	
I <sub>x</sub>	114,85 cm <sup>4</sup>
I <sub>y</sub>	31,96 cm <sup>4</sup>
W <sub>x</sub>	25,52 cm <sup>3</sup>
W <sub>y</sub>	14,20 cm <sup>3</sup>
Área Transversal	14,53 cm <sup>2</sup>
Peso	3,92 kg/m
Corte Máximo	6000 mm



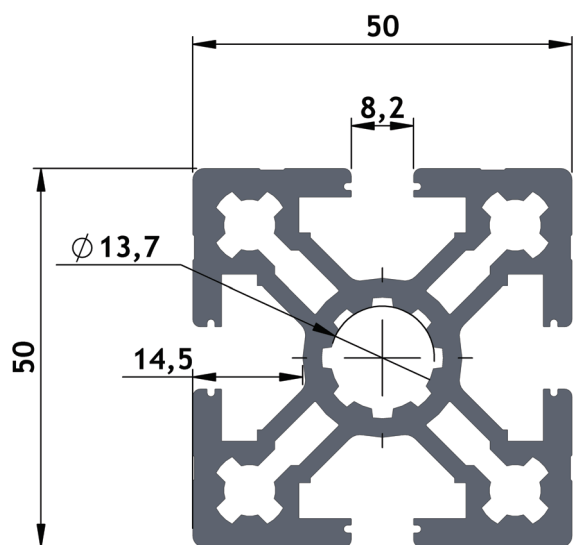
QCS-B	
I <sub>x</sub>	17,90 cm <sup>4</sup>
I <sub>y</sub>	30,13 cm <sup>4</sup>
W <sub>x</sub>	5,97 cm <sup>3</sup>
W <sub>y</sub>	13,39 cm <sup>3</sup>
Área Transversal	8,82 cm <sup>2</sup>
Peso	2,38 kg/m
Corte Máximo	6000 mm



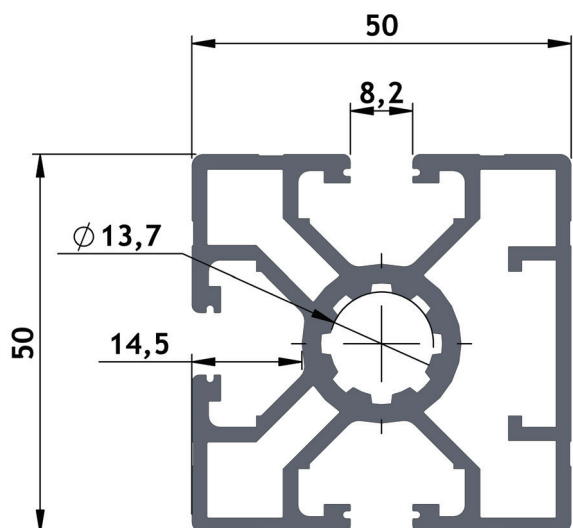
# PERFIL 50



C-B	
$I_{xy}$	20,50 cm <sup>4</sup>
$W_{xy}$	8,20 cm <sup>3</sup>
Área Transversal	8,43 cm <sup>2</sup>
Peso	2,28 kg/m
Corte Máximo	6000 mm



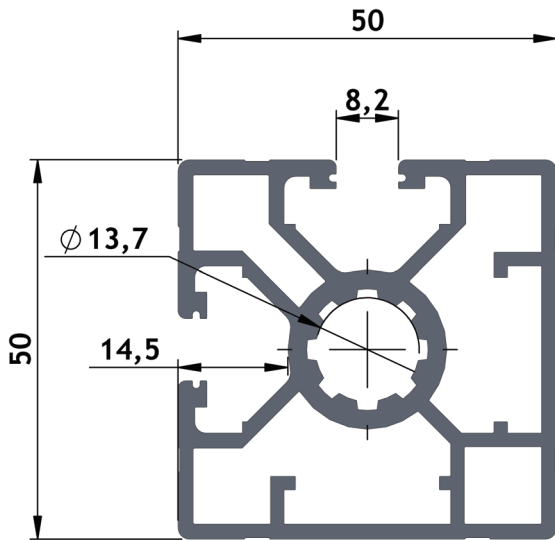
C-R	
$I_{xy}$	27,17 cm <sup>4</sup>
$W_{xy}$	10,87 cm <sup>3</sup>
Área Transversal	10,44 cm <sup>2</sup>
Peso	2,82 kg/m
Corte Máximo	6000 mm



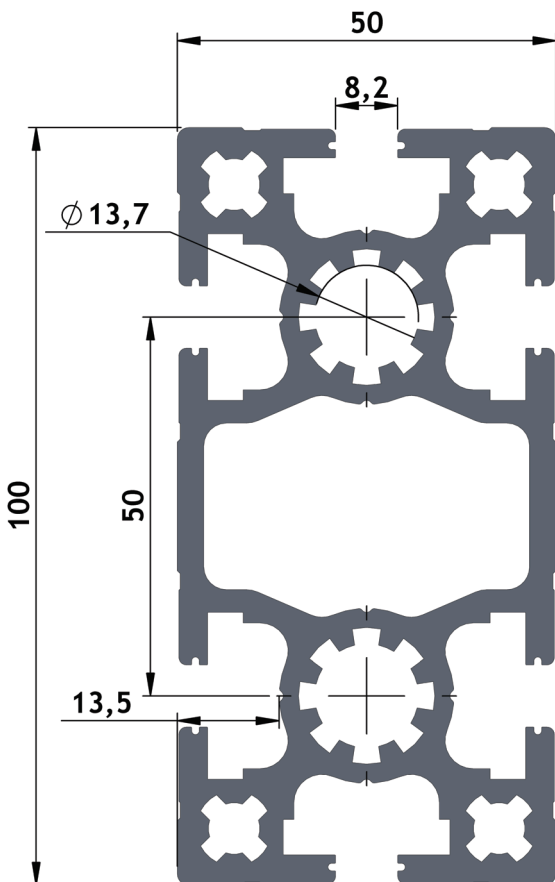
C-1F	
$I_x$	19,02 cm <sup>4</sup>
$I_y$	19,04 cm <sup>4</sup>
$W_x$	7,61 cm <sup>3</sup>
$W_y$	7,77 cm <sup>3</sup>
Área Transversal	7,68 cm <sup>2</sup>
Peso	2,07 kg/m
Corte Máximo	6000 mm



# PERFIL 50



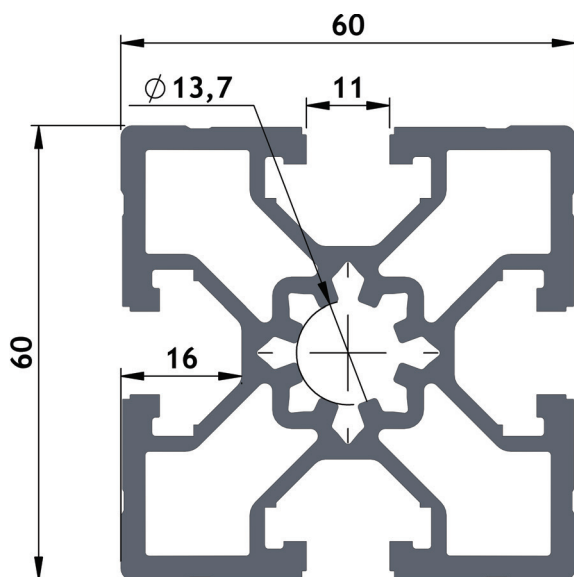
C-2FL	
I <sub>x</sub>	18,72 cm <sup>4</sup>
I <sub>y</sub>	19,50 cm <sup>4</sup>
W <sub>x</sub>	7,77 cm <sup>3</sup>
W <sub>y</sub>	7,46 cm <sup>3</sup>
Área Transversal	7,62 cm <sup>2</sup>
Peso	2,06 kg/m
Corte Máximo	6000 mm



CS-R	
I <sub>x</sub>	48,85 cm <sup>4</sup>
I <sub>y</sub>	189,99 cm <sup>4</sup>
W <sub>x</sub>	9,77 cm <sup>3</sup>
W <sub>y</sub>	75,39 cm <sup>3</sup>
Área Transversal	18,09 cm <sup>2</sup>
Peso	4,88 kg/m
Corte Máximo	6000 mm



# PERFIL 60

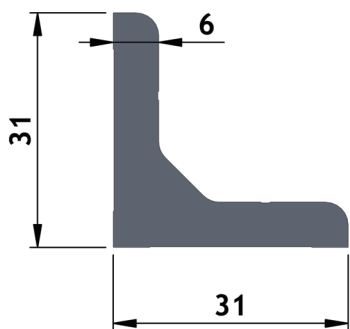


SE-B	
$I_{xy}$	41,99 cm <sup>4</sup>
$W_{xy}$	14,00 cm <sup>3</sup>
Área Transversal	11,54 cm <sup>2</sup>
Peso	3,12 kg/m
Corte Máximo	6000 mm



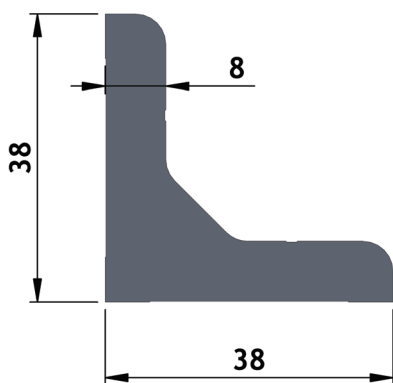


## PERFIS ESPECIAIS (CANTONEIRAS)



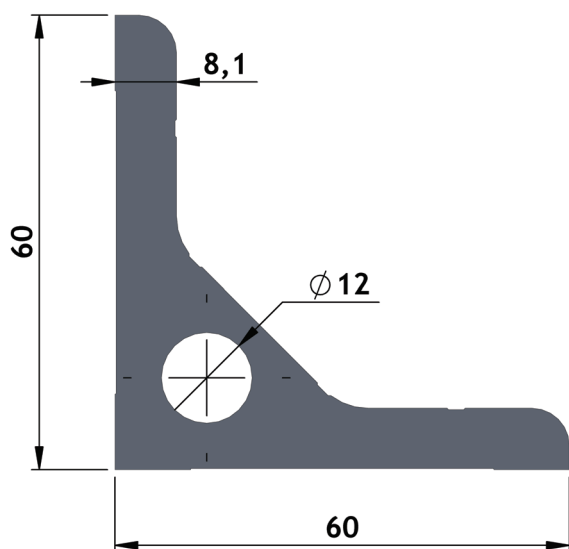
### CA-31

Área Transversal	3,52 cm <sup>2</sup>
Peso	0,95 kg/m
Corte Máximo	6000 mm



### CA-38

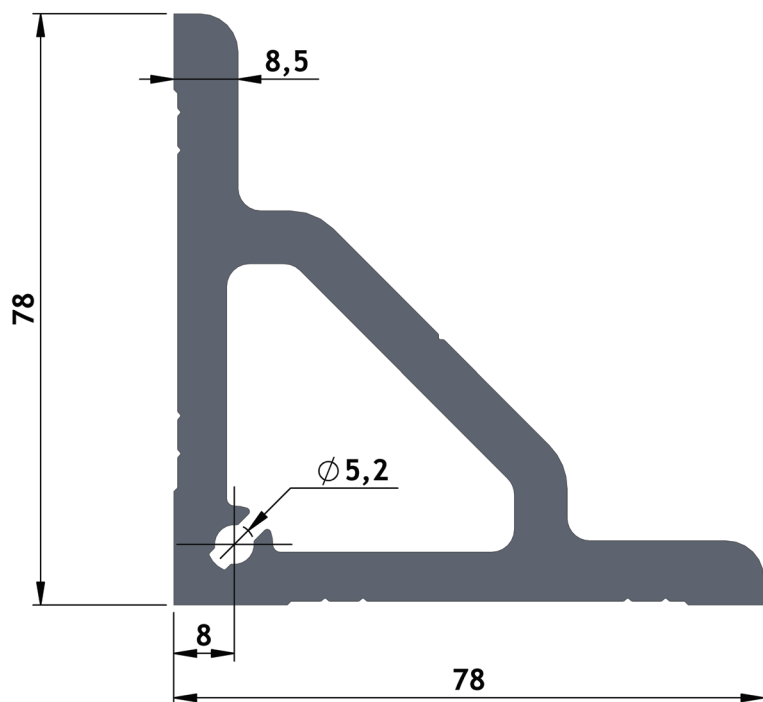
Área Transversal	5,75 cm <sup>2</sup>
Peso	1,55 kg/m
Corte Máximo	6000 mm



### CA-60

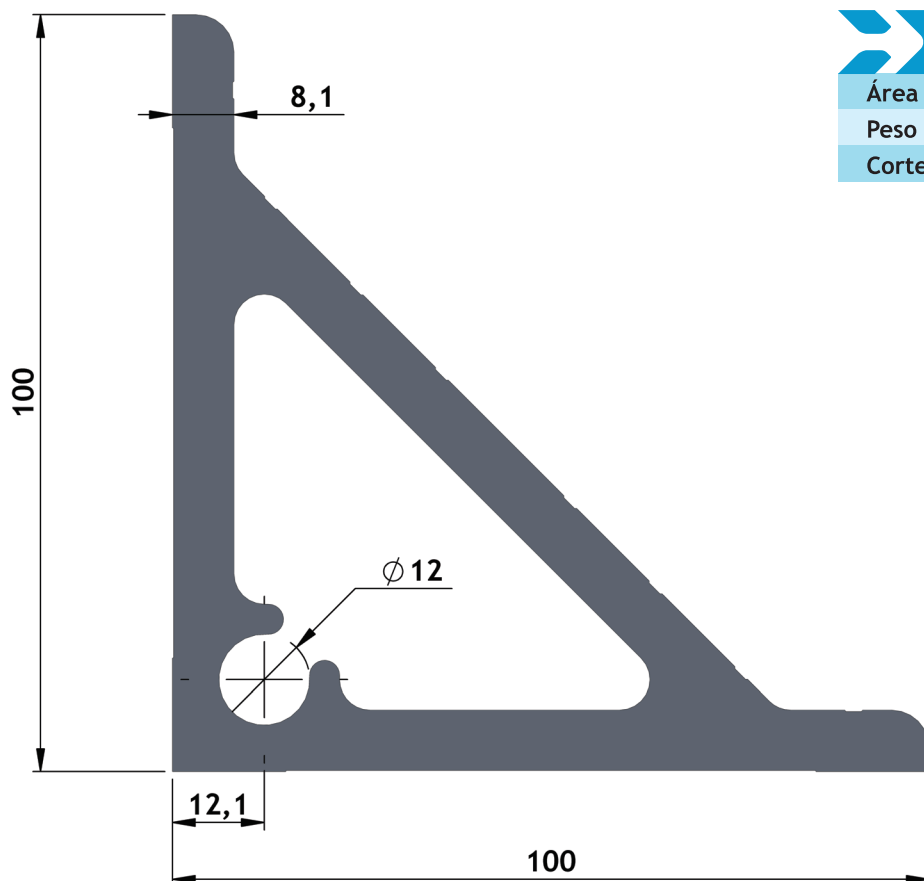
Área Transversal	10,16 cm <sup>2</sup>
Peso	2,74 kg/m
Corte Máximo	6000 mm

## PERFIS ESPECIAIS (CANTONEIRAS)



### CA-78

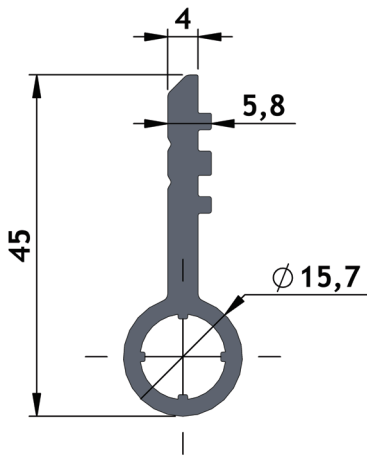
Área Transversal	15,14 cm <sup>2</sup>
Peso	4,09 kg/m
Corte Máximo	6000 mm



### CA-100

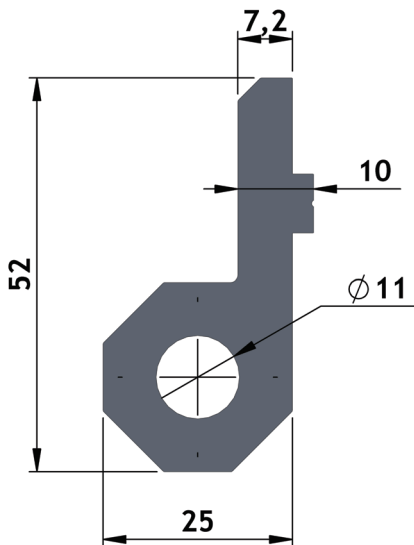
Área Transversal	23,49 cm <sup>2</sup>
Peso	6,34 kg/m
Corte Máximo	6000 mm

## PERFIS ESPECIAIS (DOBRADIÇAS)



**1241**

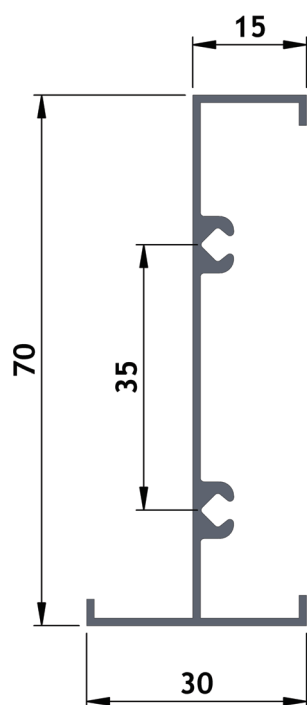
Área Transversal	2,23 cm <sup>2</sup>
Peso	0,60 kg/m
Corte Máximo	6000 mm



**DF-2552**

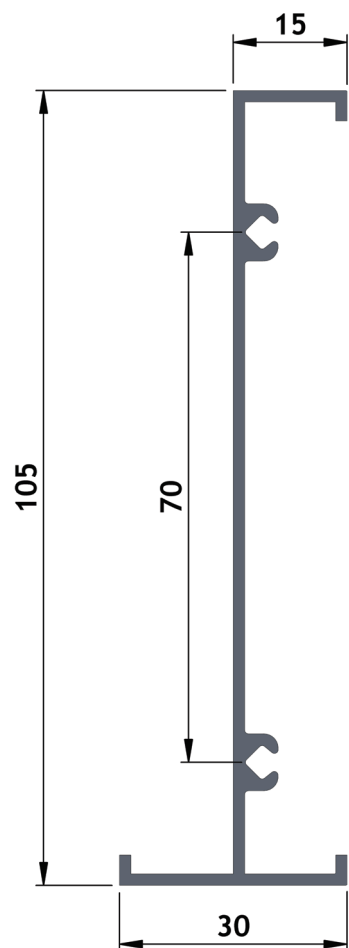
Área Transversal	6,46 cm <sup>2</sup>
Peso	1,74 kg/m
Corte Máximo	6000 mm

## PERFIS ESPECIAIS (GAVETAS)



### PG-70

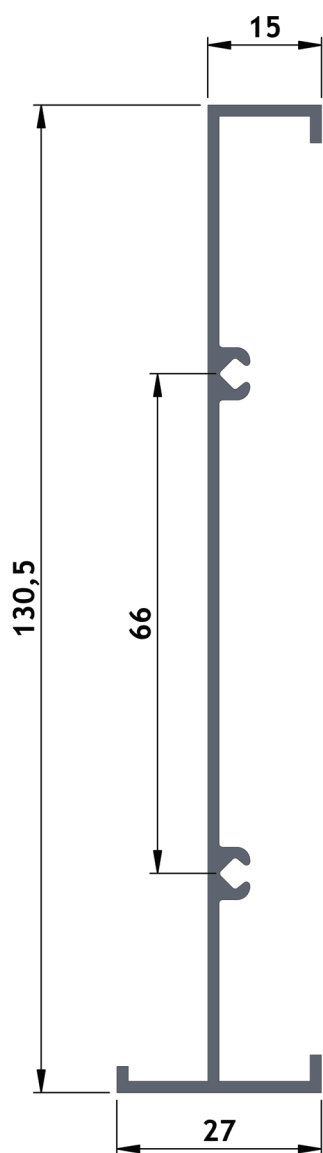
Área Transversal	1,59 cm <sup>2</sup>
Peso	0,43 kg/m
Corte Máximo	6000 mm



### PG-105

Área Transversal	2,71 cm <sup>2</sup>
Peso	0,73 kg/m
Corte Máximo	6000 mm

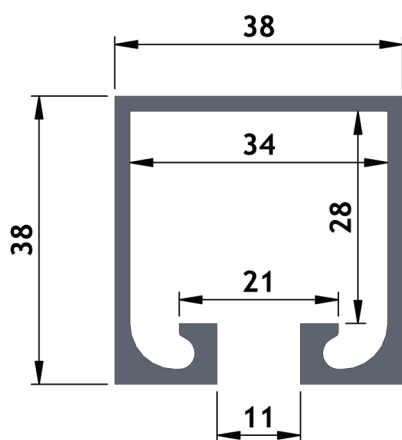
# PERFIS ESPECIAIS (GAVETAS)



## PG-130

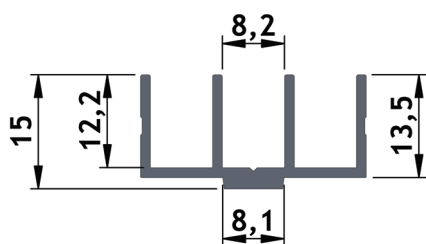
Área Transversal	2,99 cm <sup>2</sup>
Peso	0,81 kg/m
Corte Máximo	6000 mm

## PERFIS ESPECIAIS (DIVERSOS)



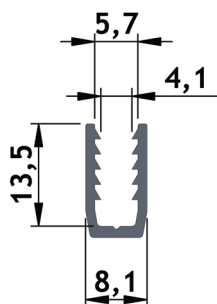
### P-G40

Ix	6,87 cm <sup>4</sup>
Iy	6,73 cm <sup>4</sup>
Wx	3,35 cm <sup>3</sup>
Wy	3,54 cm <sup>3</sup>
Área Transversal	3,28 cm <sup>2</sup>
Peso	0,88 kg/m
Corte Máximo	6000 mm



### PC-T

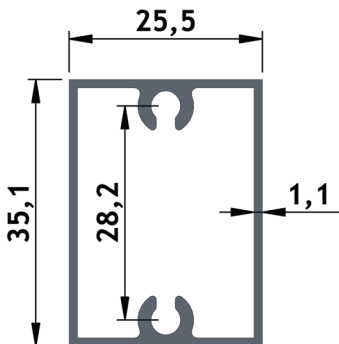
Área Transversal	1,13 cm <sup>2</sup>
Peso	0,30 kg/m
Corte Máximo	6000 mm



### PF-U

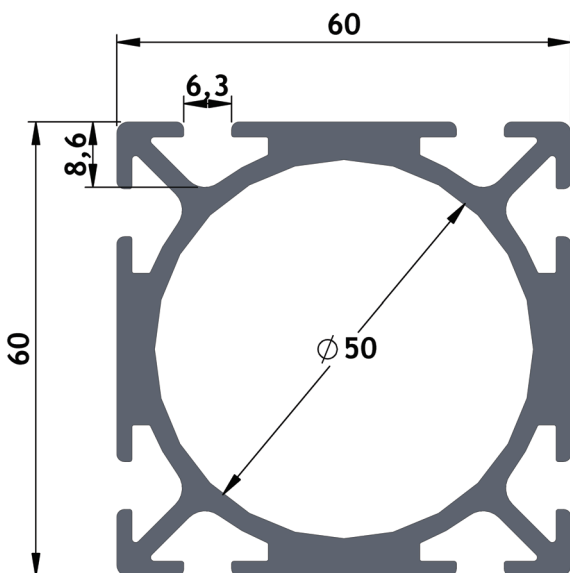
Área Transversal	0,48 cm <sup>2</sup>
Peso	0,13 kg/m
Corte Máximo	6000 mm

## PERFIS ESPECIAIS (DIVERSOS)



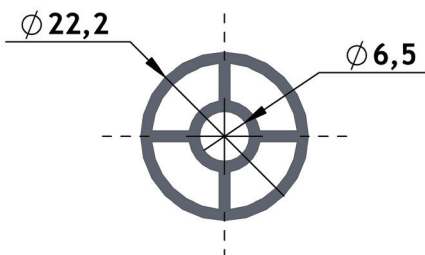
**1859**

Ix	1,41 cm <sup>4</sup>
Iy	3,14 cm <sup>4</sup>
Wx	0,81 cm <sup>3</sup>
Wy	2,46 cm <sup>3</sup>
Área Transversal	1,71 cm <sup>2</sup>
Peso	0,46 kg/m
Corte Máximo	6000 mm



**SE-B-AR**

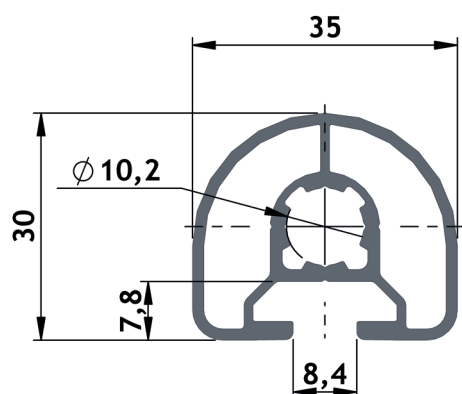
Ixy	44,62 cm <sup>4</sup>
Wxy	14,87 cm <sup>3</sup>
Área Transversal	9,89 cm <sup>2</sup>
Peso	2,67 kg/m
Corte Máximo	6000 mm



**PT-R22-M8**

Área Transversal	1,64 cm <sup>2</sup>
Peso	0,44 kg/m
Corte Máximo	6000 mm

## PERFIS ESPECIAIS (DIVERSOS)



### TCT-A

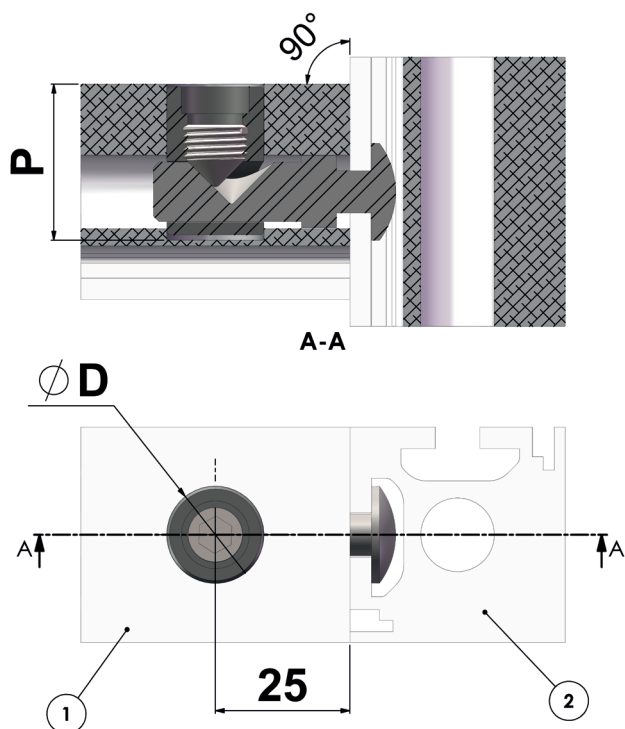
Ix	2,26 cm <sup>4</sup>
Iy	2,85 cm <sup>4</sup>
Wx	1,70 cm <sup>3</sup>
Wy	1,63 cm <sup>3</sup>
Área Transversal	2,68 cm <sup>2</sup>
Peso	0,72 kg/m
Corte Máximo	6000 mm





# ACESSÓRIOS

# SELEÇÃO FURAÇÃO E CONECTORES



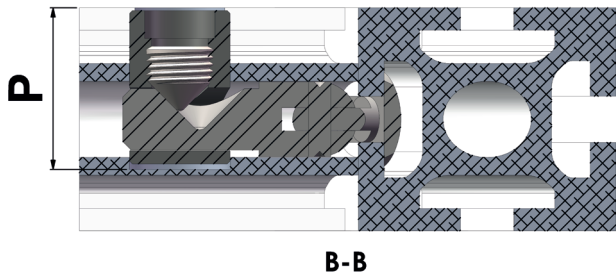
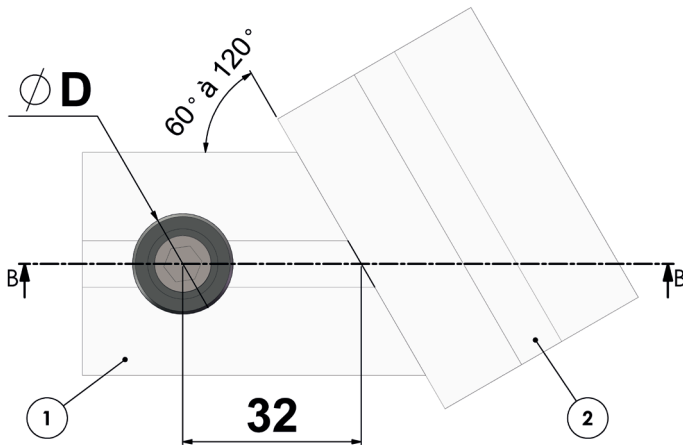
PERPENDICULAR		
CONECTOR	ØD	P
20	7,3	PASSANTE
25	15,1	23,0
30	15,1	22,5
40	18,1	29,0
40 M12	18,1	33,0
45	18,1	31,5
50	18,1	34,0

\* = EM DESENVOLVIMENTO

CONECTOR BÁSICO								
2 PINO	20	25	30	30 ABAULADO	40	40 M12	45	50
<b>1 BUCHA</b>								
20	CO-B20	CO-B20	CO-B20	CO-B20	CO-B20	CO-B20	-	-
25	-	*	*	*	*	*	-	-
30	CO-B30-13	CO-B30	CO-B30	CO-B30-13	CO-B30	CO-B30	CO-B30	CO-B30
30 ABAULADO	CO-B30-13-BC	CO-B30-BC	CO-B30-BC	CO-B30-13-BC	CO-B30-BC	CO-B30-BC	CO-B30-BC	CO-B30-BC
40	-	-	-	-	CO-B40	CO-B40	CO-B40	CO-B40
40 M12	-	-	-	-	-	*	-	-
45	-	-	-	-	CO-B45	CO-B45	CO-B45	CO-B45
50	-	-	-	-	CO-B50	CO-B50	CO-B50	CO-B50

CONECTOR ROSCADO								
2 PINO	20	25	30	30 ABAULADO	40	40 M12	45	50
<b>1 BUCHA</b>								
20	-	-	-	-	-	-	-	-
25	CO-R825	CO-R825	CO-R825	CO-R825	CO-R825	CO-R825	CO-R825	CO-R825
30	CO-R830	CO-R830	CO-R830	CO-R830	CO-R830	CO-R830	CO-R830	CO-R830
30 ABAULADO	CO-R830-BC	CO-R830-BC	CO-R830-BC	CO-R830-BC	CO-R830-BC	CO-R830-BC	CO-R830-BC	CO-R830-BC
40	CO-R840	CO-R840	CO-R840	CO-R840	CO-R840	CO-R840	CO-R840	CO-R840
40 M12	CO-RAL840	CO-RAL840	CO-RAL840	CO-RAL840	CO-RAL840	CO-RAL840	CO-RAL840	CO-RAL840
45	CO-R845	CO-R845	CO-R845	CO-R845	CO-R845	CO-R845	CO-R845	CO-R845
50	CO-R850	CO-R850	CO-R850	CO-R850	CO-R850	CO-R850	CO-R850	CO-R850

# SELEÇÃO FURAÇÃO E CONECTORES

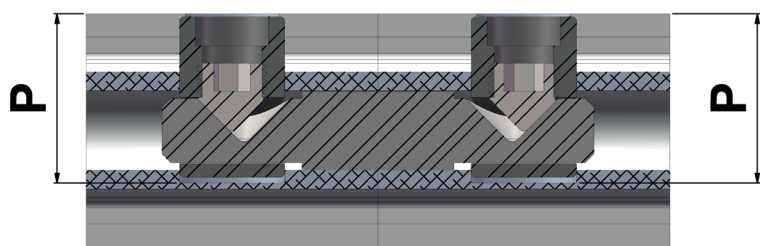

**B-B**


ANGULAR		
CONECTOR	ØD	P
20	7,3	PASSANTE
25	15,1	23,0
30	15,1	22,5
40	18,1	29,0
40 M12	18,1	33,0
45	18,1	31,5
50	18,1	34,0

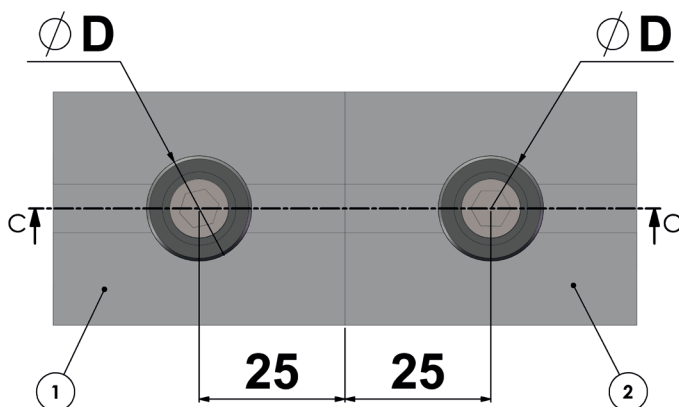
\* = EM DESENVOLVIMENTO

CONECTOR ANGULAR									
	2 PINO	20	25	30	30 ABAULADO	40	40 M12	45	50
1 BUCHA									
20		CO-A20	CO-A20	CO-A20	CO-A20	CO-A20	CO-A20	-	-
25		-	*	*	*	*	*	-	-
30		CO-A30-13	CO-A30	CO-A30	CO-A30-13	CO-A30	CO-A30	CO-A30	CO-A30
30 ABAULADO		CO-A30-13-BC	CO-A30-BC	CO-A30-BC	CO-A30-13-BC	CO-A30-BC	CO-A30-BC	CO-A30-BC	CO-A30-BC
40		-	-	-	-	CO-A40	CO-A40	CO-A40	CO-A40
40 M12		-	-	-	-	-	*	-	-
45		-	-	-	-	CO-A45	CO-A45	CO-A45	CO-A45
50		-	-	-	-	CO-A50	CO-A50	CO-A50	CO-A50

# SELEÇÃO FURAÇÃO E CONECTORES



C-C

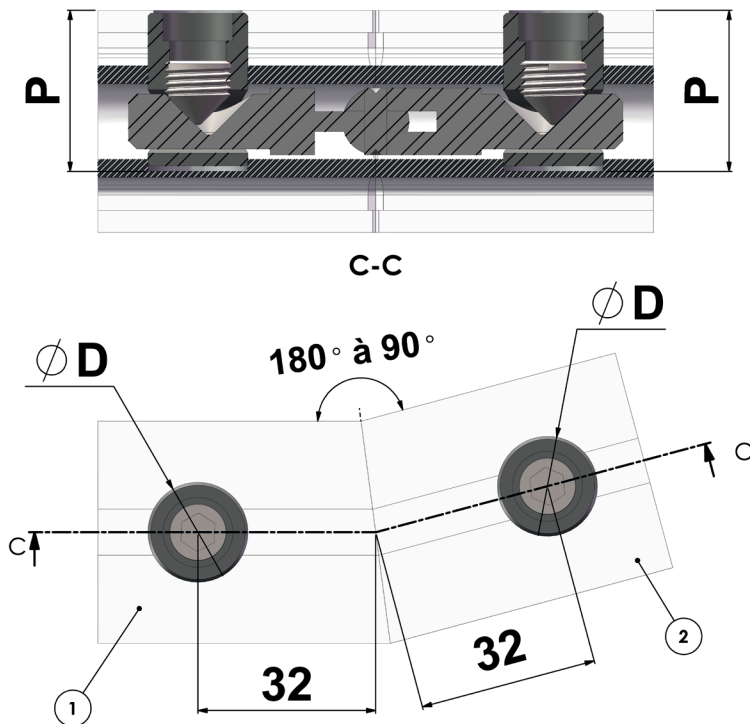


LINEAR		
CONECTOR	ØD	P
20	7,3	PASSANTE
25	15,1	23,0
30	15,1	22,5
40	18,1	29,0
40 M12	18,1	33,0
45	18,1	31,5
50	18,1	34,0

\* = EM DESENVOLVIMENTO

CONECTOR LINEAR								
	2 PINO	25	30	30 ABAULADO	40	40 M12	45	50
1 BUCHA	25	*	-	-	-	-	-	-
	30	-	CO-L30	-	-	-	-	-
30 ABAULADO	30	-	-	CO-L30-BC	-	-	-	-
	40	-	-	-	CO-L40	-	-	-
40 M12	-	-	-	-	-	*	-	-
45	-	-	-	-	-	-	CO-L45	-
50	-	-	-	-	-	-	-	CO-L50

# SELEÇÃO FURAÇÃO E CONECTORES



## TOPO ANGULAR

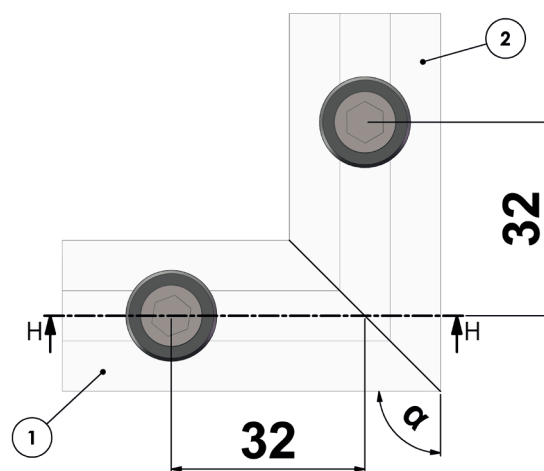
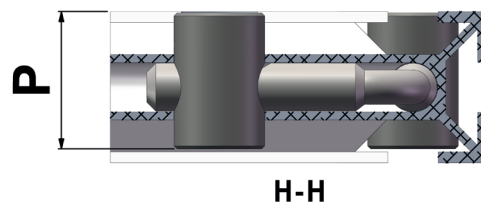
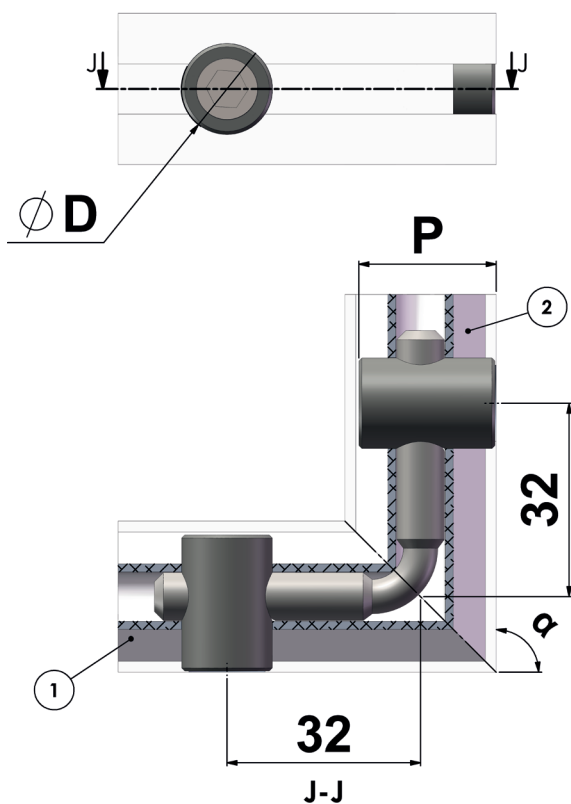
CONECTOR	ØD	P
20	7,3	PASSANTE
25	15,1	23,0
30	15,1	22,5
40	18,1	29,0
40 M12	18,1	33,0
45	18,1	31,5
50	18,1	34,0

\* = EM DESENVOLVIMENTO

## CONECTOR TOPO ANGULAR

2 PINO	20	25	30	30 ABAULADO	40	40 M12	45	50
1 BUCHA								
20	CO-TA20	-	-	-	-	-	-	-
25	-	CO-TF25	-	-	-	-	-	-
30	-	-	CO-TA30	-	-	-	-	-
30 ABAULADO	-	-	-	CO-TA30-BC	-	-	-	-
40	-	-	-	-	CO-TA40	-	-	-
40 M12	-	-	-	-	-	*	-	-
45	-	-	-	-	-	-	CO-TA45	-
50	-	-	-	-	-	-	-	CO-TA50

# SELEÇÃO FURAÇÃO E CONECTORES

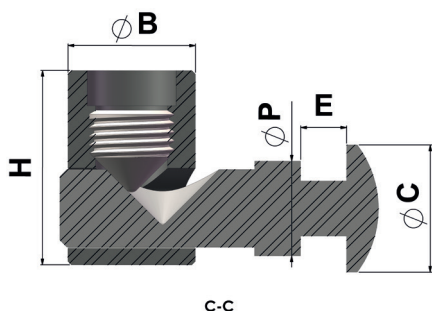


TOPO FIXO		
CONECTOR	ØD	P
20	7,3	PASSANTE
25	15,1	23,0
30	15,1	22,5
40	18,1	29,0
40 M12	18,1	33,0
45	18,1	31,5
50	18,1	34,0

\* = EM DESENVOLVIMENTO

CONECTOR TOPO FIXO							
2 PINO	25	30	30 ABAULADO	40	40 M12	45	50
1 BUCHA							
25	CO-TF2590L CO-TF2590E CO-TF2545L	-	-	-	-	-	-
30	-	CO-TF3090L	-	-	-	-	-
30 ABAULADO	-	-	CO-TF3090L-BC	-	-	-	-
40	-	-	-	CO-TF4090L	-	-	-
40 M12	-	-	-	-	*	-	-
45	-	-	-	-	-	CO-TF4590L	-
50	-	-	-	-	-	-	CO-TF5090L

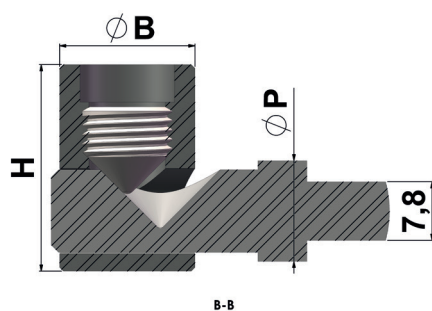
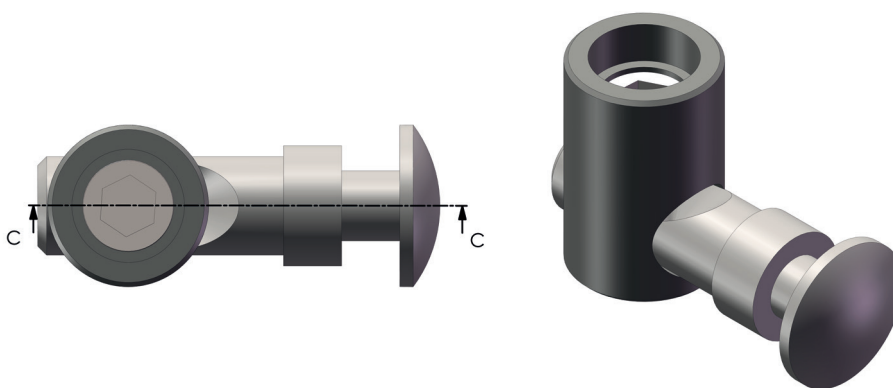
# ACESSÓRIOS CONECTORES



## CO-B

PERFIL	H	ØB	ØP	E	ØC	CÓDIGO
20	14	8	5,8	-	13,5	CO-B20
30 ABAULADO	21,5	15	12	4,7	13	CO-B30-13/CO-B30-BC
30	21,5	15	12	4,7	15,9	CO-B30
40	27,5	18	13,4	6,3	18	CO-B40
45	30	18	13,4	6,3	18	CO-B45
50	32,5	18	13,4	6,3	18	CO-B50

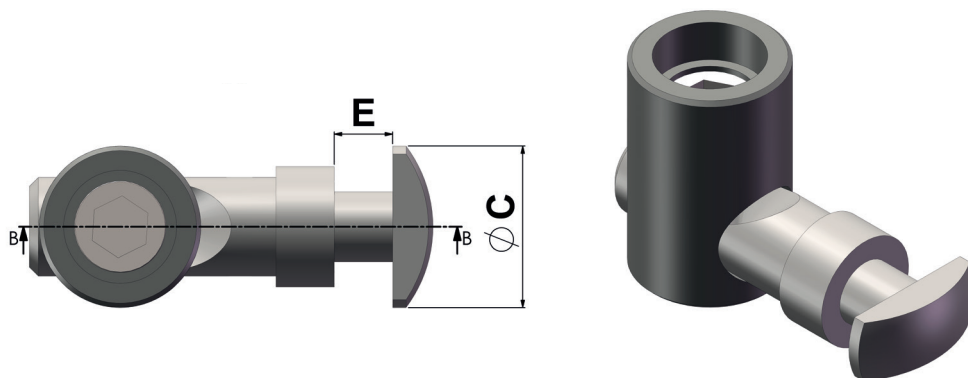
MATERIAL - Aço Zincado



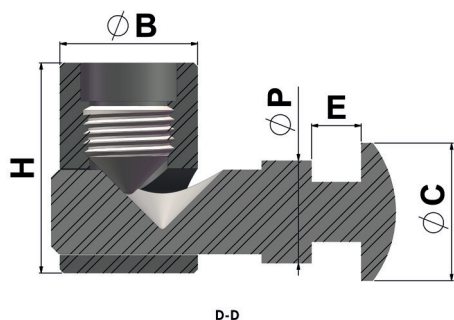
## CO-BH

PERFIL	H	ØB	ØP	E	ØC	CÓDIGO
20	14	8	5,8	-	13,5	CO-BH20
25	22,5	15				CO-BH25
30 ABAULADO	21,5	15	12	4,7	13	CO-BH30-13/CO-BH30-BC
30	21,5	15	12	4,7	15,9	CO-BH30
40	27,5	18	13,4	6,3	18	CO-BH40
45	30	18	13,4	6,3	18	CO-BH45
50	32,5	18	13,4	6,3	18	CO-B50

MATERIAL - Aço Zincado



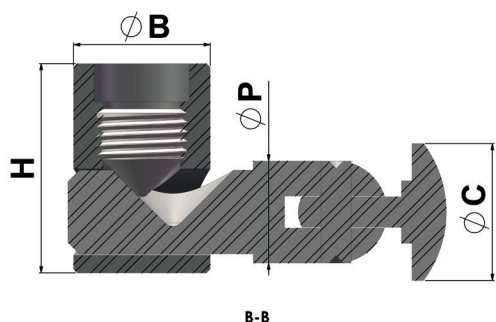
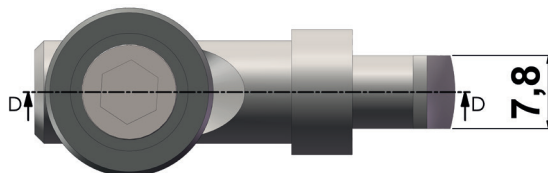
# ACESSÓRIOS CONECTORES



## CO-BV

PERFIL	H	ØB	ØP	E	ØC	CÓDIGO
20	14	8	5,8	-	13,5	CO-BV20
25	22,5	15				CO-BV25
30 ABAULADO	21,5	15	12	4,7	13	CO-BV30-13/CO-BV30-BC
30	21,5	15	12	4,7	15,9	CO-BV30
40	27,5	18	13,4	6,3	18	CO-BV40
45	30	18	13,4	6,3	18	CO-BV45
50	32,5	18	13,4	6,3	18	CO-BV50

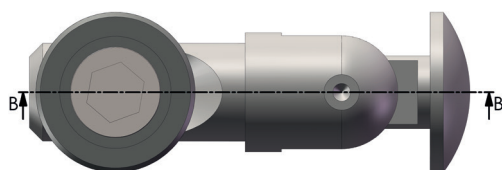
MATERIAL - Aço Zincado



## CO-A

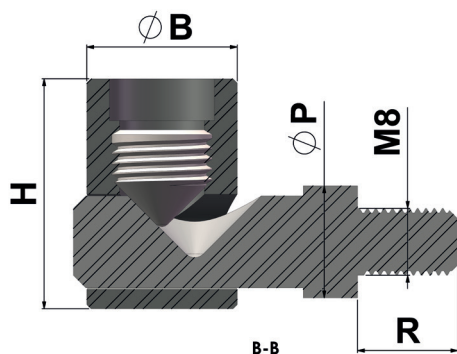
PERFIL	H	ØB	ØP	ØC	CÓDIGO
20	14	8	5,8	13,5	CO-A20
30	21,5	15	12	13	CO-A30
30 ABAULADO	21,5	15	12	15,9	CO-A30-13/CO-A30-BC
40	27,5	18	13,4	18	CO-A40
45	30	18	13,4	18	CO-A45
50	32,5	18	13,4	18	CO-A50

MATERIAL - Aço Zincado





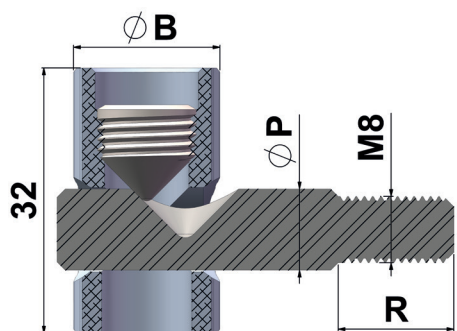
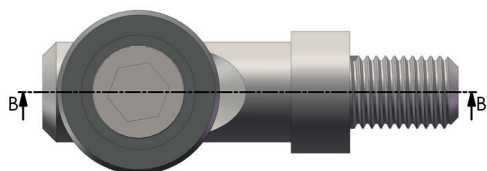
# ACESSÓRIOS CONECTORES



## CO-R

PERFIL	H	ØB	ØP	R	CÓDIGO
20	-	-	-	-	-
25	22,5	15	8	10	CO-R825
30 ABAULADO	21,5	15	12	10	CO-R830-BC
30	21,5	15	12	10	CO-R830
40	27,5	18	13,4	12	CO-R840
45	30	18	13,4	12	CO-R845
50	32,5	18	13,4	12	CO-R850

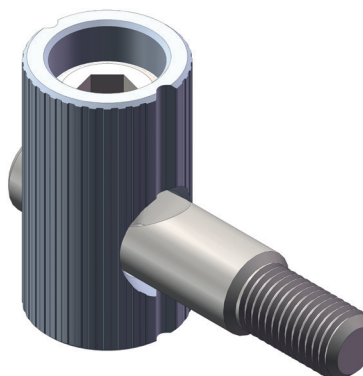
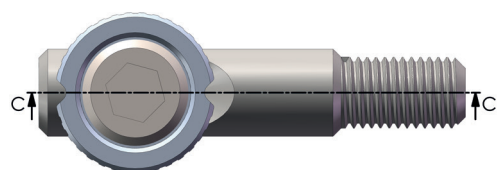
MATERIAL - Aço Zincado



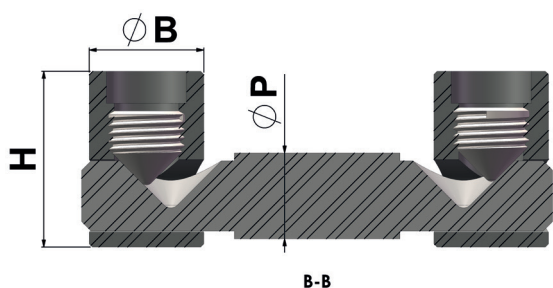
## CO-RAL

PERFIL	H	ØB	ØP	R	CÓDIGO
40 M12	32	18	9,8	14	CO-RAL840

BUCHA: Alumínio  
PINO E PARAFUSO: Aço Zincado

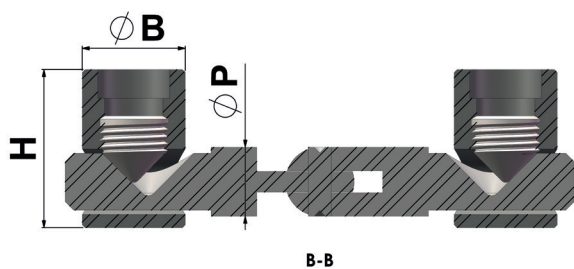
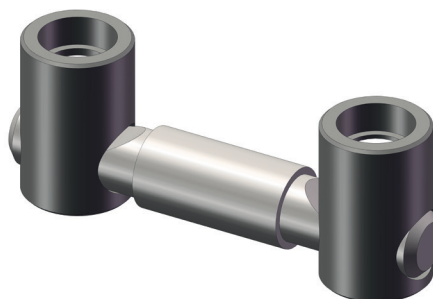


# ACESSÓRIOS CONECTORES



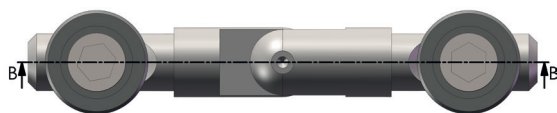
CO-L				
PERFIL	H	ØB	ØP	CÓDIGO
20	14	8	5,8	CO-L20
25	22,5	15	-	CO-L25
30 ABAULADO	21,5	15	12	CO-L30-BC
30	21,5	15	12	CO-L30
40	27,5	18	13,4	CO-L40
45	30	18	13,4	CO-L45
50	32,5	18	13,4	CO-L50

MATERIAL - Aço Zincado

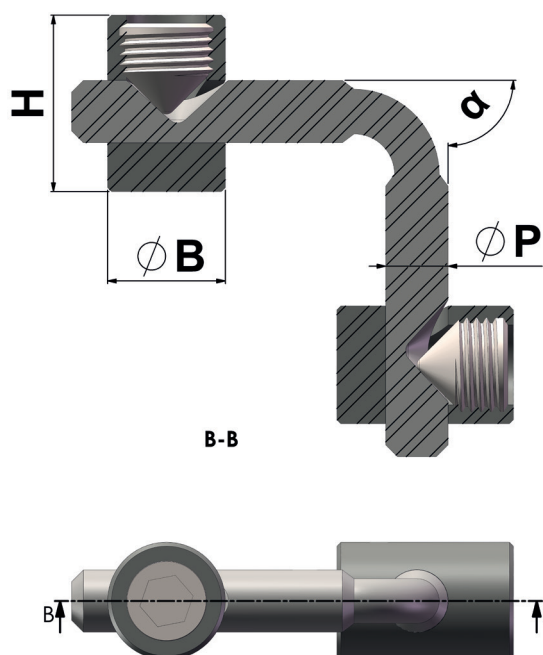


CO-TA					
PERFIL	H	ØB	ØP	ØC	CÓDIGO
20	14	8	5,8	13,5	CO-TA20
25					CO-TA25
30 ABAULADO	21,5	15	12	13	CO-TA30-BC
30	21,5	15	12	15,9	CO-TA30
40	27,5	18	13,4	18	CO-TA40
45	30	18	13,4	18	CO-TA45
50	32,5	18	13,4	18	CO-TA50

MATERIAL - Aço Zincado



# ACESSÓRIOS CONECTORES



CO-TF						
PERFIL	H	ØB	ØP	α	FURAÇÃO	CÓDIGO
25	22,5	15	8	90	EXTERNA	CO-TF2590E
25	21,5	15	8	90	LATERAL	CO-TF2590L
25	21,5	15	8	45	LATERAL	CO-TF2545L
30 ABAULADO	21,5	15	9,9	90	LATERAL	CO-TF3090L
30	21,5	15	9,9	90	LATERAL	CO-TF3090L
40	27,5	18	10,9	90	LATERAL	CO-TF4090L
45	30	18	10,9	90	LATERAL	CO-TF4590L
50	32,5	18	10,9	90	LATERAL	CO-TF5090L

MATERIAL - Aço Zincado

# ACESSÓRIOS CANTONEIRAS

## CA-31

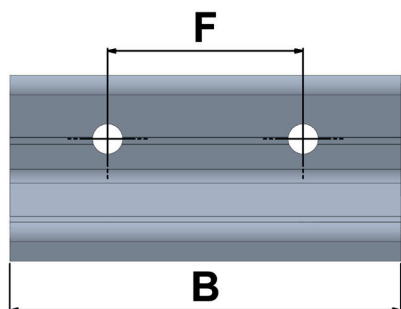
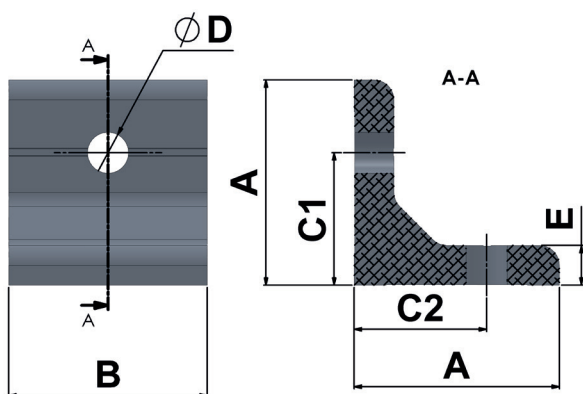
A	B	C1	C2	D	E	F	CÓDIGO
31	20	15	20	6,2	6	-	CA-31 20 15 20
31	20	20	20	6,2	6	-	CA-31 20 20 20
31	25	15	20	6	6	-	CA-31 25 15 20
31	25	20	20	6	6	-	CA-31 25 20 20
31	30	15	20	6,2	6	-	CA-31 30 15 20
31	30	20	20	6,2	6	-	CA-31 30 20 20
31	40	15	20	6,2	6	-	CA-31 40 15 20
31	40	20	20	6,2	6	-	CA-31 40 20 20
31	60	15	20	6,2	6	30	CA-31 60 15 20
31	60	20	20	6,2	6	30	CA-31 60 20 20
31	80	15	20	6	6	40	CA-31 80 15 20
31	80	20	20	6	6	40	CA-31 80 20 20

MATERIAL - Alumínio

## CA-38

A	B	C1	C2	D	E	F	CÓDIGO
38	20	20	20	6,2	8	-	CA-38 20 20 20
38	25	20	20	6,2	8	-	CA-38 25 20 20
38	25	20	25	6,2	8	-	CA-38 25 20 25
38	25	25	25	6,2	8	-	CA-38 25 25 25
38	30	20	20	6,2	8	-	CA-38 30 20 20
38	30	20	25	6,2	8	-	CA-38 30 20 25
38	30	25	25	6,2	8	-	CA-38 30 25 25
38	35	20	20	6,2	8	-	CA-38 35 20 20
38	40	20	20	6,2	8	-	CA-38 40 20 20
38	40	20	25	6,2	8	-	CA-38 40 20 25
38	40	25	25	6,2	8	-	CA-38 40 25 25
38	40	22,5	22,5	6,2	8	-	CA-38 40 22,50 22,50
38	50	25	25	6,2	8	-	CA-38 50 25 25
38	60	20	20	6,2	8	30	CA-38 60 20 20
38	60	20	25	6,2	8	30	CA-38 60 20 25
38	80	20	20	6,2	8	40	CA-38 80 20 20
38	80	20	25	6,2	8	40	CA-38 80 20 25
38	100	25	25	6,2	8	50	CA-38 100 25 25

MATERIAL - Alumínio

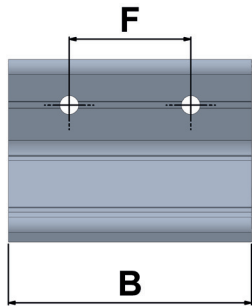
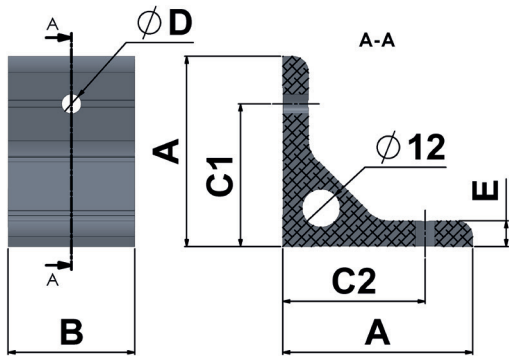


# ACESSÓRIOS CANTONEIRAS

## CA-60

A	B	C1	C2	D	E	F	CÓDIGO
60	20	45	45	6,2	8	-	CA- 60 20 45 45
60	25	45	45	6,2	8	-	CA- 60 25 45 45
60	30	45	45	6,2	8	-	CA- 60 30 45 45
60	40	45	45	6,2	8	-	CA- 60 40 45 45
60	60	45	45	6,2	8	30	CA- 60 60 45 45
60	80	45	45	6,2	8	40	CA- 60 80 45 45
60	100	45	45	6,2	8	50	CA- 60 100 45 45

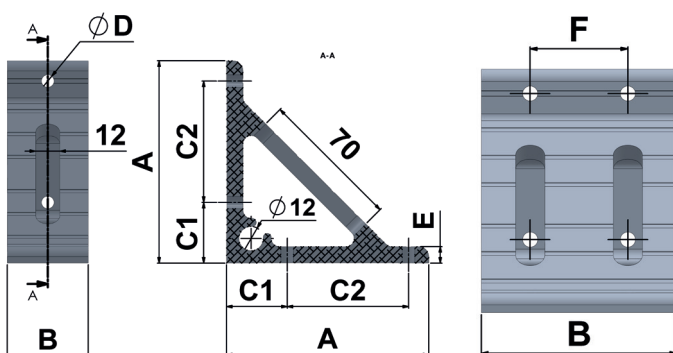
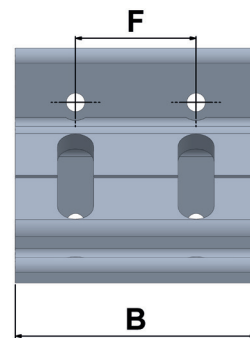
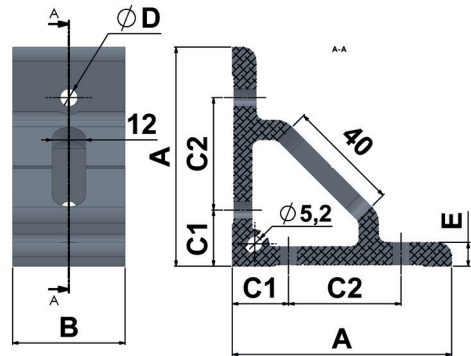
MATERIAL - Alumínio



## CA-78

A	B	C1	C2	D	E	F	CÓDIGO
78	20	20	40	6,2	8	-	CA- 78 20 20 40
78	25	20	40	6,2	8	-	CA- 78 25 20 40
78	30	20	40	6,2	8	-	CA- 78 30 20 40
78	40	20	40	6,2	8	-	CA- 78 40 20 40
78	50	20	40	6,2	8	-	CA- 78 50 20 40
78	60	20	40	6,2	8	30	CA- 78 60 20 40
78	80	20	40	6,2	8	40	CA- 78 80 20 40
78	100	20	40	6,2	8	50	CA- 78 100 20 40

MATERIAL - Alumínio

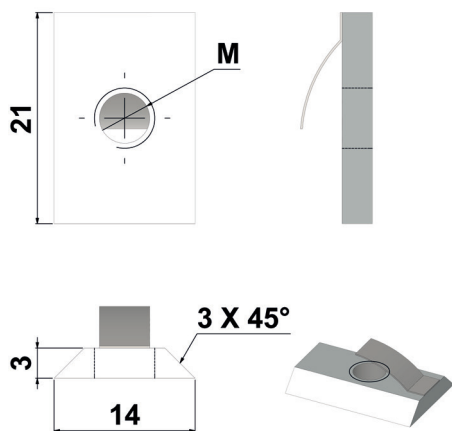


## CA-100

A	B	C1	C2	D	E	F	CÓDIGO
100	20	30	60	6,2	8	-	CA- 100 20 30 60
100	25	30	60	6,2	8	-	CA- 100 25 30 60
100	30	30	60	6,2	8	-	CA- 100 30 30 60
100	40	30	60	6,2	8	-	CA- 100 40 30 60
100	60	30	60	6,2	8	30	CA- 100 60 30 60
100	80	30	60	6,2	8	40	CA- 100 80 30 60
100	100	30	60	6,2	8	50	CA- 100 100 30 60

MATERIAL - Alumínio

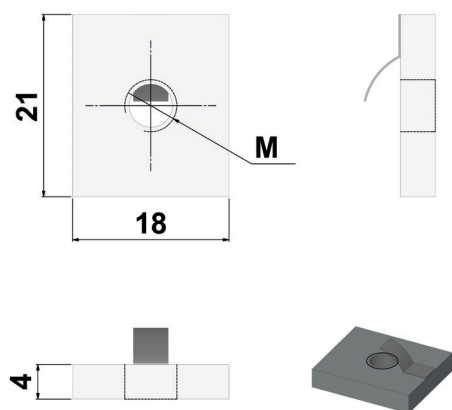
# ACESSÓRIOS PORCAS



## PO-C

M(ROSCA)	CÓDIGO
M4	PO-C440
M5	PO-C540
M6	PO-C640
M8	PO-C840

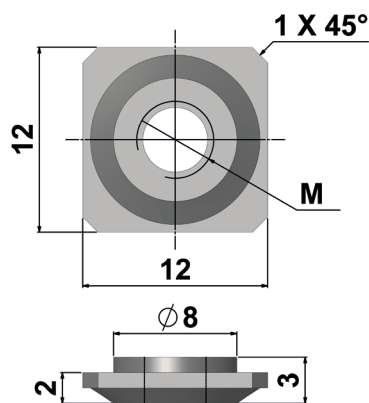
MATERIAL - Aço Zincado



## PO-R

M(ROSCA)	CÓDIGO
M4	PO-R440
M5	PO-R540
M6	PO-R640
M8	PO-R840

MATERIAL - Aço Zincado

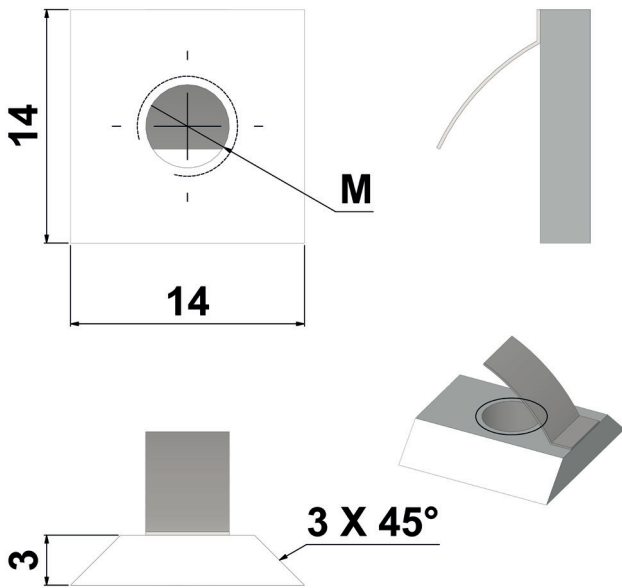


## PO-Q-20

M (ROSCA)	CÓDIGO
M4	PO-Q420
M5	PO-Q520
M6	PO-Q620

MATERIAL - Aço Zincado

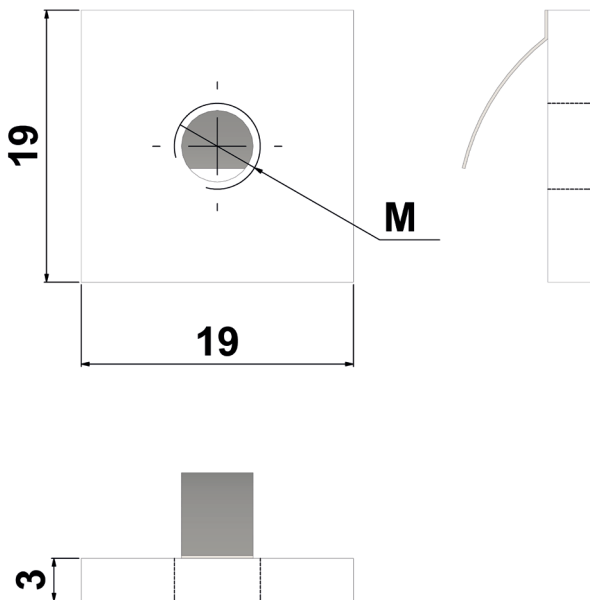
# ACESSÓRIOS PORCAS



## PO-Q-30

M (ROSCA)	CÓDIGO
M4	PO-Q430
M5	PO-Q530
M6	PO-Q630
M8	PO-Q830

MATERIAL - Aço Zincado

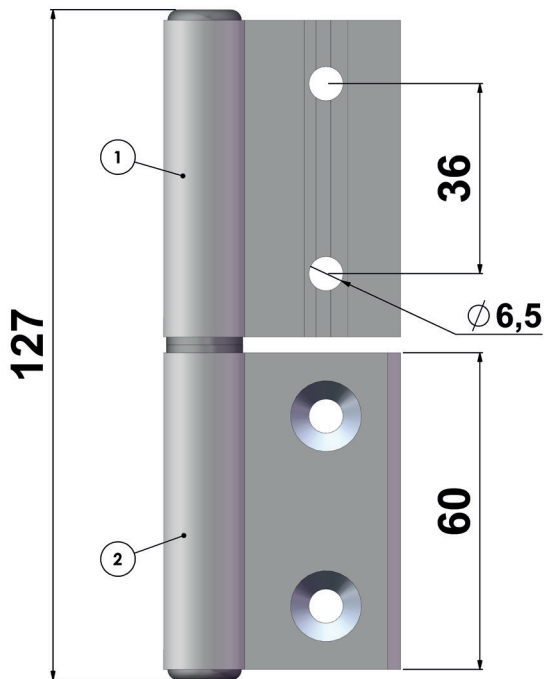


## PO-Q-50

M (ROSCA)	CÓDIGO
M4	PO-Q450
M5	PO-Q550
M6	PO-Q650
M8	PO-Q850

MATERIAL - Aço Zincado

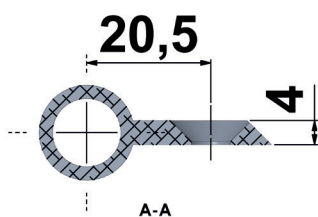
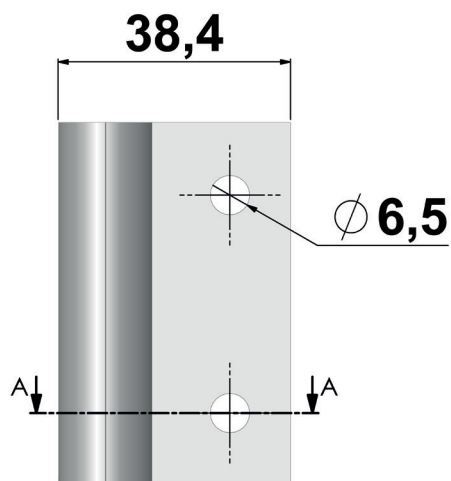
# ACESSÓRIOS DOBRADIÇAS



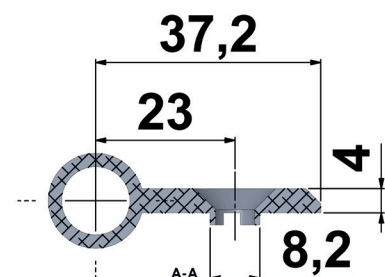
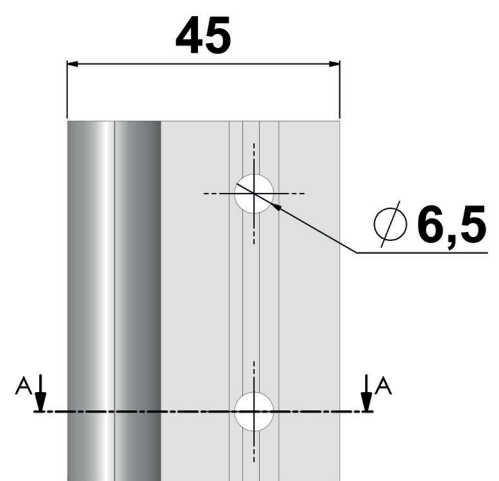
		DA			
ABA 1		25	30	40	45
ABA 2					
25		DA-P2525	DA-P3025	DA-P4025	DA-P4525
30		DA-P2530	DA-P3030	DA-P4030	DA-P4530
40		DA-P2540	DA-P3040	DA-P4040	DA-P4540
45		DA-P2545	DA-P3045	DA-P4045	DA-P4545

MATERIAL - Alumínio

ABA - 25



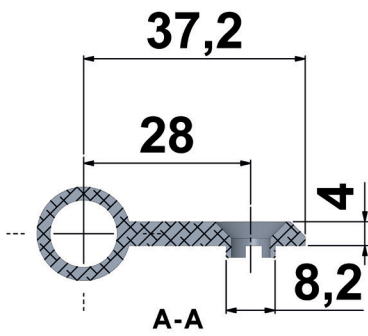
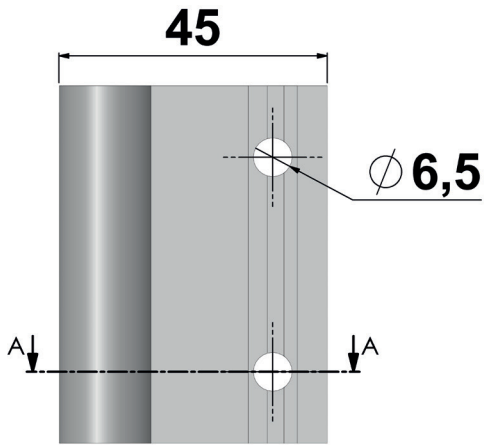
ABA - 30



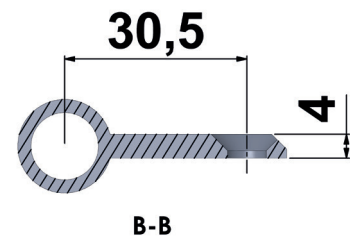
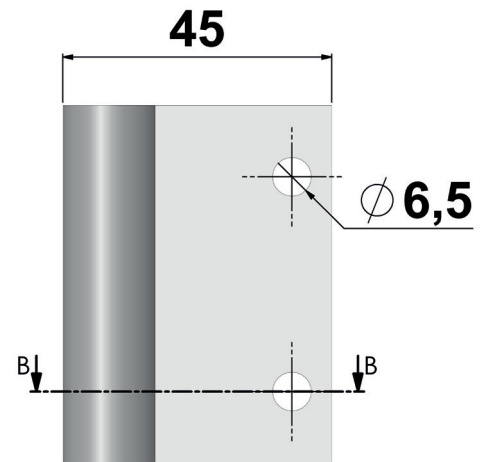


# ACESSÓRIOS DOBRADIÇAS

**ABA - 40**

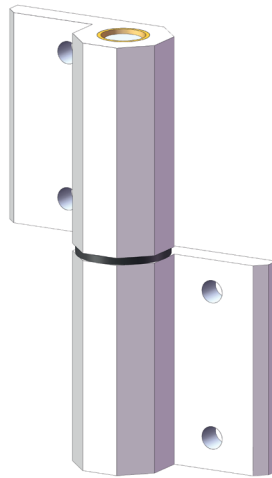
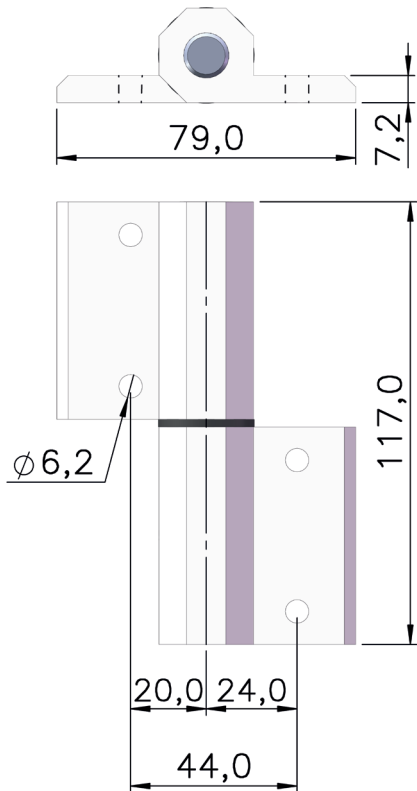


**ABA - 45**

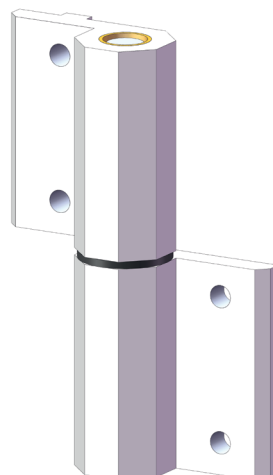
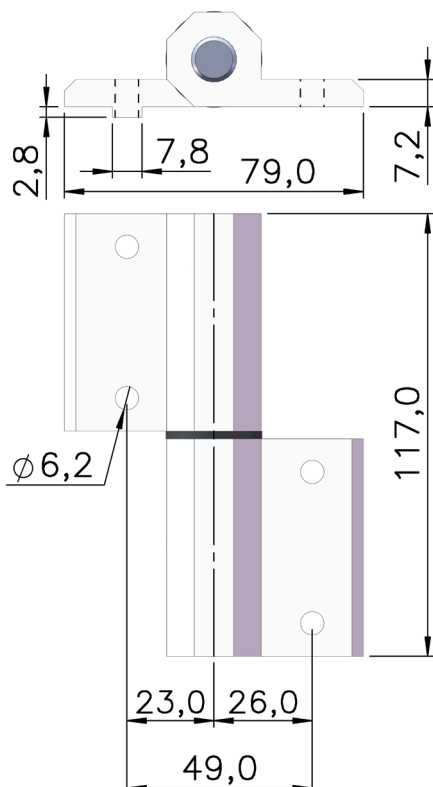


# ACESSÓRIOS DOBRADIÇAS

## DOBRADIÇA ALUMÍNIO REFORÇADA

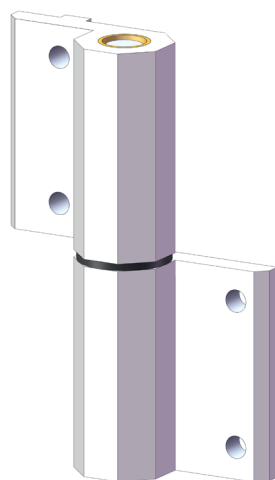
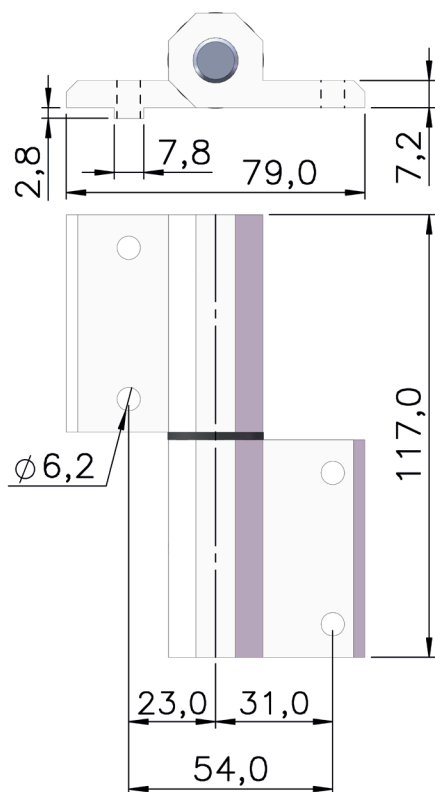


PERFIL 40 - 40  
DAR-P4040



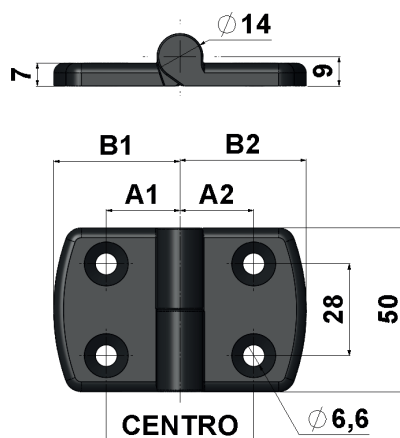
PERFIL 45 - 45  
DAR-P4545

# ACESSÓRIOS DOBRADIÇAS



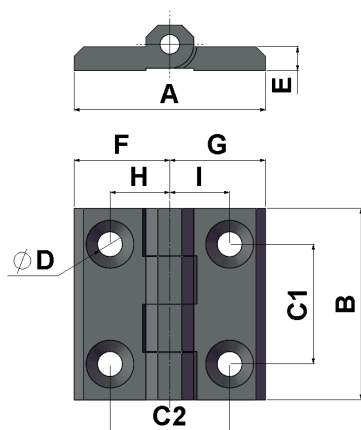
**PERFIL 50 - 50**  
DAR-P5050

# ACESSÓRIOS DOBRADIÇAS



DP								
BASE DO PERFIL	A	A1	A2	B	B1	B2	ABERTURA DIR.	ABERTURA ESQ.
30X30 / 30X40	35	17,5	17,5	59	29,5	29,5	DP-D35	DP-E35
30X40 / 40X40	40	17,5	22,5	68	29,5	38,5	DP-D40	DP-E40
45X30/50X30	40	17,5	22,5	68	29,5	38,5	DP-D40	DP-E40
40X40/ 45X40	45	22,5	22,5	77	38,5	38,5	DP-D45	DP-E45
45X45/ 50X30/50X40	45	22,5	22,5	77	38,5	38,5	DP-D45	DP-E45
50X50	50	22,5	27,5	87	38,5	48,5	DP-D50	DP-E50
50X45	50	22,5	27,5	87	38,5	48,5	DP-D50	DP-E50

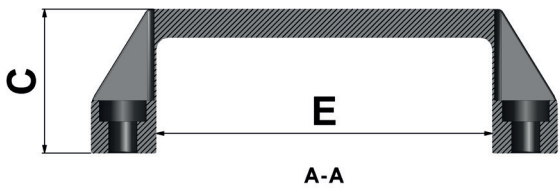
MATERIAL - Poliamida



DZ										
BASE DO PERFIL	A	A1	A2	B	B1	B2	C	E	F	CÓDIGO
20+20	25	12,5	12,5	40	20	20	40	5	5,2	DZ-25
30+20	25	12,5	12,5	40	20	20	40	5	5,2	DZ-25
30+30	30	15	15	50	25	25	50	6	6,2	DZ-30
40+30	36	18	18	60	30	30	60	8	8,2	DZ-36
40+40	43	28	15	63	38	25	50	6	6,2	DZ-43
50+30	43	28	15	63	38	25	50	6	6,2	DZ-43
50+40	SOB CONSULTA									
50+50	56	28	28	76	38	38	50	6	6,2	DZ-56

MATERIAL - Zamak

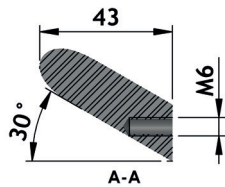
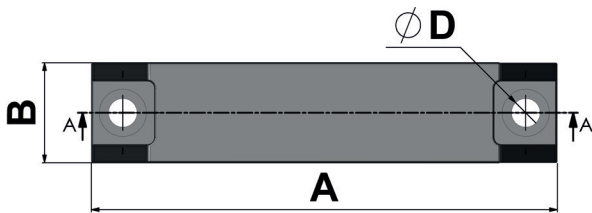
# ACESSÓRIOS PUXADORES



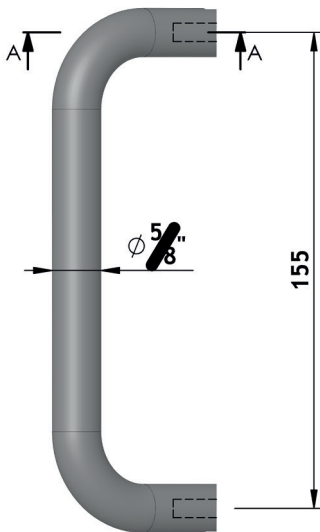
## PU

TAMANHO	A	B	C	D	E	CÓDIGO
PEQUENO	107	21	36	6,2	75	PU-107
MÉDIO	133	28,6	41	8,2	96	PU-133
FRANDE	196	29,2	56	8,2	152	PU-196

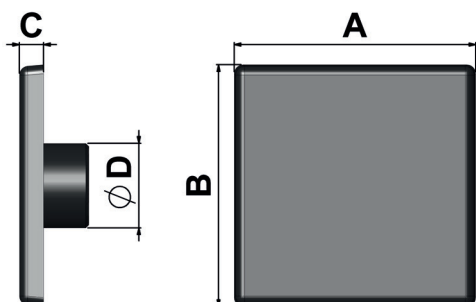
MATERIAL - Poliamida



## PA

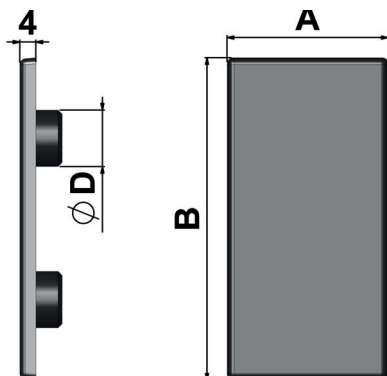


# ACESSÓRIOS CAPAS

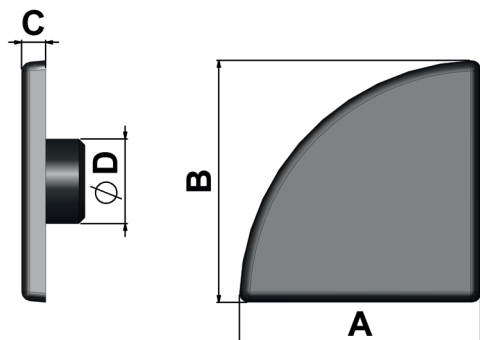


CP				
A	B	C	D	CÓDIGO
20	20	4	6,2	CP-2020
30	30	4	12,5	CP-3030
40	40	4	14	CP-4040
40	40	4	10	CP-4040-10
45	45	4	14	CP-4545
50	50	4	14	CP-5050

MATERIAL - Poliamida

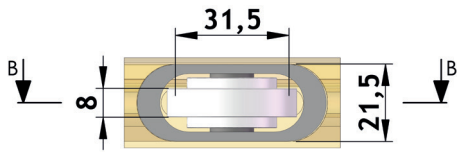


CP				
A	B	C	D	CÓDIGO
40	80	4	14	CP-4080

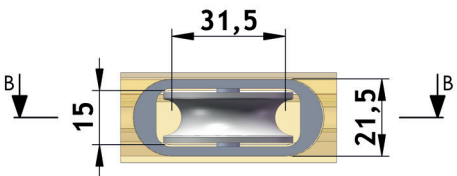
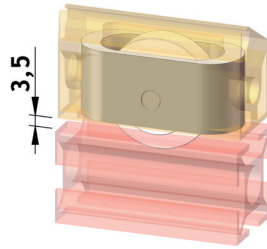
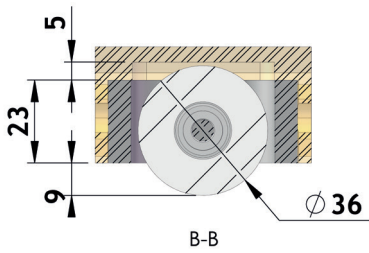


CO_AB				
A	B	C	D	CÓDIGO
30	30	4	12,5	CP-3030AB
40	40	4	14	CP-4040AB

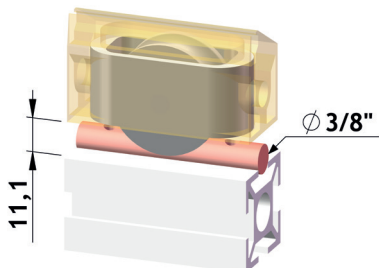
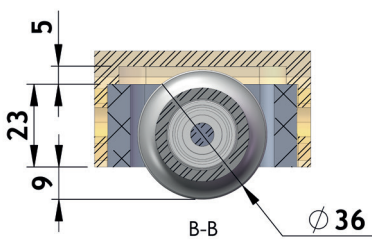
# ACESSÓRIOS ROLDANAS



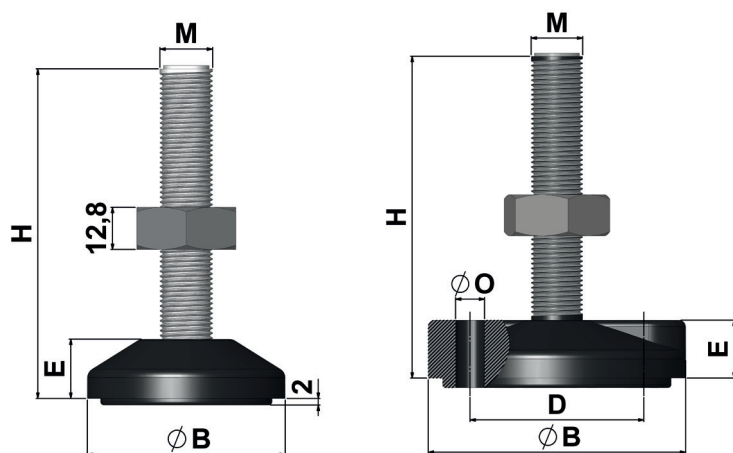
**RO-I**



**RO-IF**



# ACESSÓRIOS PÉS DE NIVELAMENTO



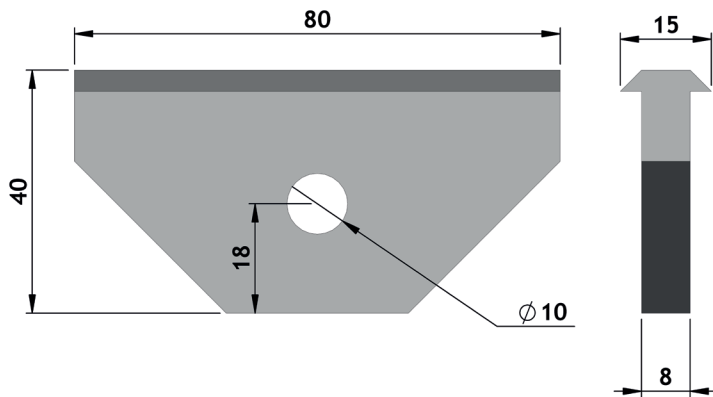
**PNA**

ØB	ROSCA M	H	E	ØO	D	CARGA (Kg)	CÓDIGO								
40	12	100	15	*	*	600	PNA-P	40	12	100	-	P	Z	A	*
40	12	150	15	*	*	600	PNA-P	40	12	150	-	P	Z	A	*
40	14	100	15	*	*	600	PNA-P	40	14	100	-	P	Z	A	*
40	16	100	15	*	*	700	PNA-P	40	16	100	-	P	Z	A	*
40	16	150	15	*	*	700	PNA-P	40	16	150	-	P	Z	A	*
40	16	200	15	*	*	700	PNA-P	40	16	200	-	P	Z	A	*
60	14	100	18	*	*	800	PNA-P	60	14	100	-	P	Z	A	*
60	16	100	18	*	*	900	PNA-P	60	16	100	-	P	Z	A	*
60	16	150	18	*	*	900	PNA-P	60	16	150	-	P	Z	A	*
60	16	200	18	*	*	900	PNA-P	60	16	200	-	P	Z	A	*
80	12	100	18	*	*	800	PNA-P	80	12	100	-	P	Z	A	*
80	12	150	18	*	*	800	PNA-P	80	12	150	-	P	Z	A	*
80	14	100	18	*	*	800	PNA-P	80	14	100	-	P	Z	A	*
80	16	100	18	*	*	1000	PNA-P	80	16	100	-	P	Z	A	*
80	16	100	18	9	54	1000	PNA-P	80	16	100	-	P	Z	A	O
80	16	150	18	*	*	1000	PNA-P	80	16	150	-	P	Z	A	*
80	16	200	18	*	*	1000	PNA-P	80	16	200	-	P	Z	A	*
100	16	100	20	*	*	1200	PNA-P	100	16	100	-	P	Z	A	*
100	16	100	20	10,5	70	1200	PNA-P	100	16	100	-	P	Z	A	O
100	16	150	20	*	*	1200	PNA-P	100	16	150	-	P	Z	A	*
100	16	150	20	10,5	70	1200	PNA-P	100	16	150	-	P	Z	A	O
100	16	200	20	*	*	1200	PNA-P	100	16	200	-	P	Z	A	*

<b>P</b>	BASE EM POLIAMIDA PRETA
<b>A</b>	BASE EM AÇO ZINCADO
<b>Z</b>	HASTE EM AÇO ZINCADO
<b>I</b>	HASTEM EM INOX
<b>A</b>	COM AMORTECEDOR
	SEM AMORTECEDOR
<b>O</b>	COM OLHAL
	SEM OLHAL
*	SEM POSSIBILIDADE DE OLHAL

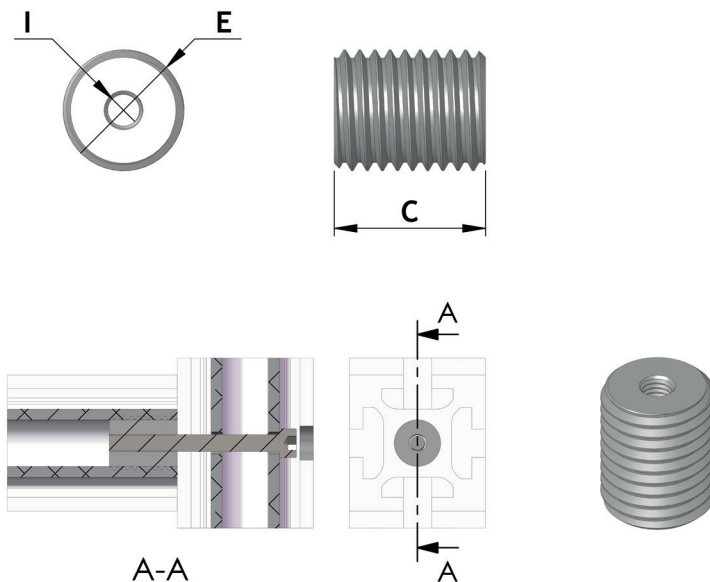


## ACESSÓRIOS DELIZANTE BALANÇIM



**1684**

## ACESSÓRIOS INSERTO ROSCADO

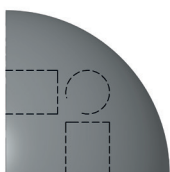
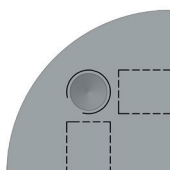
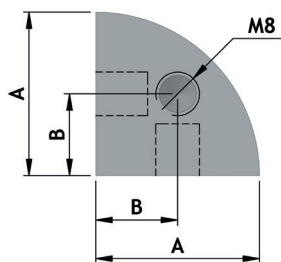


**IR**

ROSCA EXT.	ROSCA INT.	CÓDIGO
M7	M4	IR-0704
M10	M6	IR-1006
M12	M6	IR-1206
M12	M8	IR-1208
M14	M4	IR-1404
M14	M5	IR-1405
M14	M6	IR-1406
M14	M8	IR-1408
M16	M4	IR-1604
M16	M5	IR-1605
M16	M6	IR-1606
M16	M8	IR-1608
M16	M10	IR-1610

MATERIAL - Aço Zincado

# ACESSÓRIOS MONTANTE TRIPLO ABAULADO



MTA			
A	B	TRATAMENTO	CÓDIGO
40	20	FOSCO	MTA-40
40	20	POLIDO	MTA-40P
30	15	FOSCO	MTA-30
30	15	POLIDO	MTA-30P

MATERIAL - Alumínio





[www.estrutural.com](http://www.estrutural.com)

Tel: (12) 3934-1145 | WhatsApp: (12) 99716-1296

Condomínio Empresarial Califórnia Center  
Rod. Geraldo Scavone, 2300, Galpão 6 - Jardim Califórnia  
Jacareí - SP | CEP: 12.305-490



@estruturalbr